

Product datasheet for **TA325386**

CREB1 Rabbit Polyclonal Antibody

Product data:

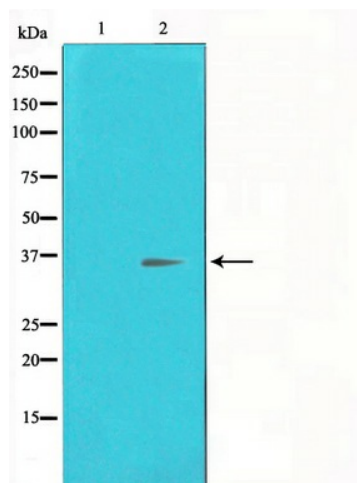
Product Type:	Primary Antibodies
Applications:	IHC, WB
Recommended Dilution:	WB: 1:500-1:2000; IHC: 1:50-1:200
Reactivity:	Human, Mouse, Rat
Host:	Rabbit
Isotype:	IgG
Clonality:	Polyclonal
Immunogen:	The antiserum was produced against a synthesized A synthesized peptide derived from human CREB.
Formulation:	Rabbit IgG in phosphate buffered saline , pH 7.4, 150mM NaCl, 0.02% sodium azide and 50% glycerol.
Concentration:	lot specific
Purification:	The antibody was affinity-purified from rabbit antiserum by affinity-chromatography using epitope-specific peptide.
Conjugation:	Unconjugated
Storage:	Store at -20°C as received.
Stability:	Stable for 12 months from date of receipt.
Gene Name:	cAMP responsive element binding protein 1
Database Link:	NP_004370 Entrez Gene 12912 MouseEntrez Gene 81646 RatEntrez Gene 1385 Human P16220
Background:	CREB a transcription factor of the leucine zipper family of DNA binding proteins. Binds as a homodimer to the cAMP-responsive element (CRE). Phosphorylated by several protein kinases, and induces transcription of genes in response to hormonal stimulation of the cAMP pathway. Two splice-variant isoforms have been described
Synonyms:	CREB
Protein Families:	Druggable Genome, Transcription Factors



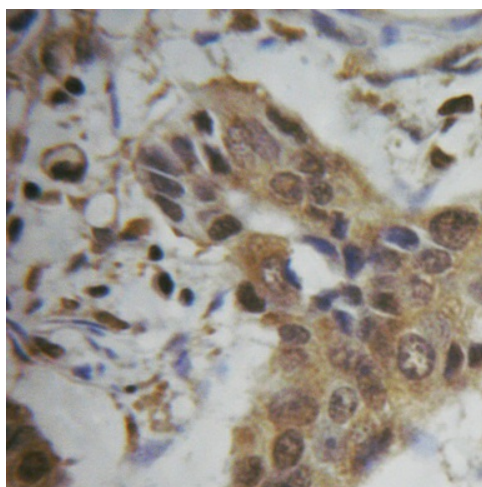
[View online »](#)

Protein Pathways: Antigen processing and presentation, Huntington's disease, Melanogenesis, Prostate cancer

Product images:



Western blot analysis on A549 and HuvEc cell lysate using CREB Antibody



Immunohistochemical analysis of paraffin-embedded breast carcinoma tissue using CREB Antibody.