

Product datasheet for **TA325382**

IKK alpha (CHUK) Rabbit Polyclonal Antibody

Product data:

Product Type:	Primary Antibodies
Applications:	WB
Recommended Dilution:	WB: 1:500-1:2000; IHC: 1:50-1:200
Reactivity:	Human, Mouse, Rat
Modifications:	Phospho-specific
Host:	Rabbit
Isotype:	IgG
Clonality:	Polyclonal
Immunogen:	The antiserum was produced against A synthesized peptide derived from human IKK- alpha around the phosphorylation site of Threonine 23
Formulation:	Rabbit IgG in phosphate buffered saline , pH 7.4, 150mM NaCl, 0.02% sodium azide and 50% glycerol.
Concentration:	lot specific
Purification:	The antibody was affinity-purified from rabbit antiserum by affinity-chromatography using epitope-specific peptide.
Conjugation:	Unconjugated
Storage:	Store at -20°C as received.
Stability:	Stable for 12 months from date of receipt.
Predicted Protein Size:	85 kDa
Gene Name:	conserved helix-loop-helix ubiquitous kinase
Database Link:	NP_001269 Entrez Gene 12675 MouseEntrez Gene 309361 RatEntrez Gene 1147 Human O15111
Background:	IKK-alpha a kinase of the IKK family. Phosphorylates inhibitors of NF-kappa-B, leading to their dissociation from NF-kappa-B and ultimately to their degradation. Phosphorylated and activated downstream of growth factor receptors, IL1R, and TNFR by NAK, IRAK and NIK, respectively.



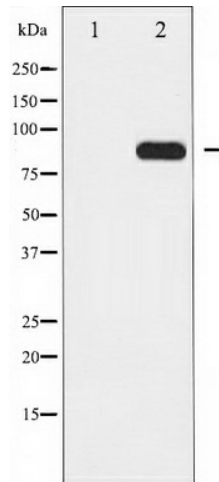
[View online »](#)

Synonyms: IKBKA; IKK-alpha; IKK1; IKKA; NFKB1A; TCF16

Protein Families: Druggable Genome, Protein Kinase

Protein Pathways: Acute myeloid leukemia, Adipocytokine signaling pathway, Apoptosis, B cell receptor signaling pathway, Chemokine signaling pathway, Chronic myeloid leukemia, Cytosolic DNA-sensing pathway, Epithelial cell signaling in Helicobacter pylori infection, MAPK signaling pathway, NOD-like receptor signaling pathway, Pancreatic cancer, Pathways in cancer, Prostate cancer, RIG-I-like receptor signaling pathway, Small cell lung cancer, T cell receptor signaling pathway, Toll-like receptor signaling pathway

Product images:



Western blot analysis of IKK- alpha phosphorylation expression in EGF treated MDA-MB-435 whole cell lysates, The lane on the left is treated with the antigen-specific peptide.