

Product datasheet for **TA325375**

Chk2 (CHEK2) Rabbit Polyclonal Antibody

Product data:

Product Type:	Primary Antibodies
Applications:	WB
Recommended Dilution:	WB: 1:500-1:2000; IF/ICC: 1:100-1:500
Reactivity:	Human, Mouse, Rat
Modifications:	Phospho-specific
Host:	Rabbit
Isotype:	IgG
Clonality:	Polyclonal
Immunogen:	The antiserum was produced against A synthesized peptide derived from human Chk2 around the phosphorylation site of Threonine 383
Formulation:	Rabbit IgG in phosphate buffered saline , pH 7.4, 150mM NaCl, 0.02% sodium azide and 50% glycerol.
Concentration:	lot specific
Purification:	The antibody was affinity-purified from rabbit antiserum by affinity-chromatography using epitope-specific peptide.
Conjugation:	Unconjugated
Storage:	Store at -20°C as received.
Stability:	Stable for 12 months from date of receipt.
Predicted Protein Size:	60 kDa
Gene Name:	checkpoint kinase 2
Database Link:	NP_001005735 Entrez Gene 50883 MouseEntrez Gene 114212 RatEntrez Gene 11200 Human O96017
Background:	In response to DNA damage and replication blocks, cell cycle progression is halted through the control of critical cell cycle regulators. The protein encoded by this gene is a cell cycle checkpoint regulator and putative tumor suppressor.
Synonyms:	CDS1; CHK2; hCds1; HuCds1; LFS2; PP1425; RAD53

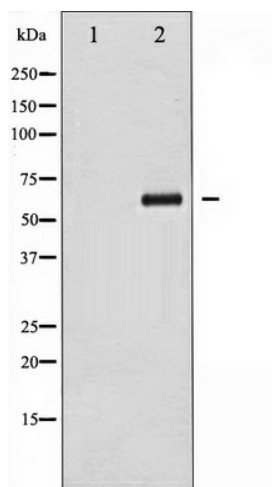


[View online »](#)

Protein Families: Druggable Genome, Protein Kinase, Stem cell - Pluripotency

Protein Pathways: Cell cycle, p53 signaling pathway

Product images:



Western blot analysis of Chk2 phosphorylation expression in UV treated COS7 whole cell lysates, The lane on the left is treated with the antigen-specific peptide.