

Product datasheet for **TA325366**

Chk1 (CHEK1) Rabbit Polyclonal Antibody

Product data:

Product Type:	Primary Antibodies
Applications:	WB
Recommended Dilution:	WB: 1:500-1:2000
Reactivity:	Human
Modifications:	Phospho-specific
Host:	Rabbit
Isotype:	IgG
Clonality:	Polyclonal
Immunogen:	The antiserum was produced against A synthesized peptide derived from human Chk1 around the phosphorylation site of Serine 280
Formulation:	Rabbit IgG in phosphate buffered saline , pH 7.4, 150mM NaCl, 0.02% sodium azide and 50% glycerol.
Concentration:	lot specific
Purification:	The antibody was affinity-purified from rabbit antiserum by affinity-chromatography using epitope-specific peptide.
Conjugation:	Unconjugated
Storage:	Store at -20°C as received.
Stability:	Stable for 12 months from date of receipt.
Predicted Protein Size:	56 kDa
Gene Name:	checkpoint kinase 1
Database Link:	NP_001107593 Entrez Gene 1111 Human O14757
Background:	DNA damage induced protein phosphorylation; regulation of mitotic centrosome separation; regulation of S phase; peptidyl-threonine phosphorylation; DNA repair; chromatin-mediated maintenance of transcription; negative regulation of mitosis;
Synonyms:	CHK1

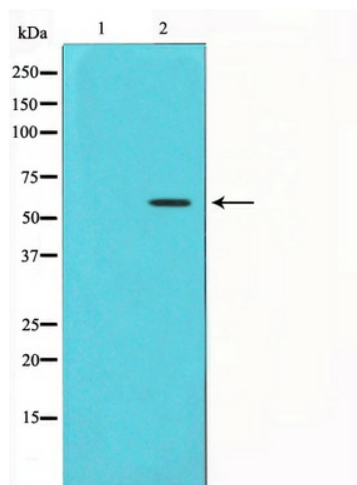


[View online »](#)

Protein Families: Druggable Genome, Protein Kinase, Stem cell - Pluripotency

Protein Pathways: Cell cycle, p53 signaling pathway

Product images:



Western blot analysis of Chk1 phosphorylation expression in UV treated HT29 whole cell lysates, The lane on the left is treated with the antigen-specific peptide.