

## Product datasheet for **TA325360**

### Cofilin 1 (CFL1) Rabbit Polyclonal Antibody

#### Product data:

|                         |  |
|-------------------------|--|
| Product Type:           | Primary Antibodies   |
| Applications:           | WB   |
| Recommended Dilution:   | WB: 1:500-1:2000   |
| Reactivity:             | Human, Mouse, Rat  |
| Modifications:          | Phospho-specific   |
| Host:                   | Rabbit   |
| Isotype:                | IgG  |
| Clonality:              | Polyclonal   |
| Immunogen:              | The antiserum was produced against A synthesized peptide derived from human Cofilin around the phosphorylation site of Serine 3  |
| Formulation:            | Rabbit IgG in phosphate buffered saline , pH 7.4, 150mM NaCl, 0.02% sodium azide and 50% glycerol.   |
| Concentration:          | lot specific   |
| Purification:           | The antibody was affinity-purified from rabbit antiserum by affinity-chromatography using epitope-specific peptide.  |
| Conjugation:            | Unconjugated   |
| Storage:                | Store at -20°C as received.  |
| Stability:              | Stable for 12 months from date of receipt.   |
| Predicted Protein Size: | 19 kDa   |
| Gene Name:              | cofilin 1  |
| Database Link:          | <a href="#">NP_005498</a><br><a href="#">Entrez Gene 12631 MouseEntrez Gene 29271 RatEntrez Gene 1072 Human P23528</a>   |
| Background:             | cofilin 1 a cytoskeletal protein that controls actin depolymerization. Has a 5-10-fold higher affinity for ATP-actin monomers than cofilin-1. May promote filament assembly rather than disassembly. Two alternatively spliced variants are described. |
| Synonyms:               | CFL; HEL-S-15  |

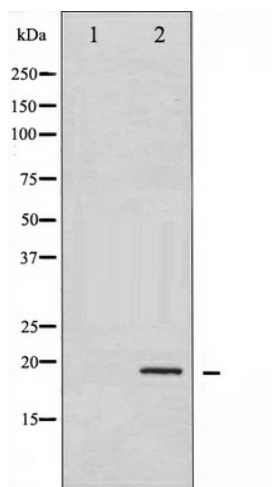


[View online »](#)

Protein Families: Druggable Genome

Protein Pathways: Axon guidance, Fc gamma R-mediated phagocytosis, Regulation of actin cytoskeleton

**Product images:**



Western blot analysis of Cofilin phosphorylation expression in COLO205 whole cell lysates, The lane on the left is treated with the antigen-specific peptide.