

## Product datasheet for **TA325359**

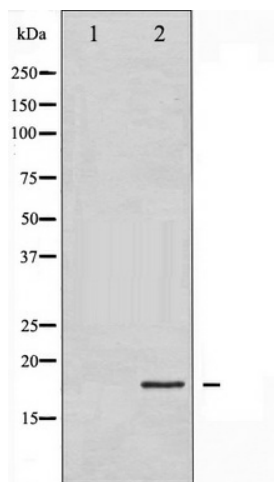
### Cofilin 1 (CFL1) Rabbit Polyclonal Antibody

#### Product data:

Product Type:	Primary Antibodies
Applications:	WB
Recommended Dilution:	WB: 1:500-1:2000
Reactivity:	Human, Mouse, Rat
Host:	Rabbit
Isotype:	IgG
Clonality:	Polyclonal
Immunogen:	The antiserum was produced against A synthesized peptide derived from human Cofilin
Formulation:	Rabbit IgG in phosphate buffered saline , pH 7.4, 150mM NaCl, 0.02% sodium azide and 50% glycerol.
Concentration:	lot specific
Purification:	The antibody was affinity-purified from rabbit antiserum by affinity-chromatography using epitope-specific peptide.
Conjugation:	Unconjugated
Storage:	Store at -20°C as received.
Stability:	Stable for 12 months from date of receipt.
Predicted Protein Size:	19 kDa
Gene Name:	cofilin 1
Database Link:	<a href="#">NP_005498</a> <a href="#">Entrez Gene 12631 Mouse</a> <a href="#">Entrez Gene 29271 Rat</a> <a href="#">Entrez Gene 1072 Human</a> <a href="#">P23528</a>
Background:	cofilin 1 a cytoskeletal protein that controls actin depolymerization. Has a 5-10-fold higher affinity for ATP-actin monomers than cofilin-1. May promote filament assembly rather than disassembly. Two alternatively spliced variants are described.
Synonyms:	CFL; HEL-S-15
Protein Families:	Druggable Genome
Protein Pathways:	Axon guidance, Fc gamma R-mediated phagocytosis, Regulation of actin cytoskeleton



[View online »](#)

**Product images:**

Western blot analysis of Cofilin expression in COLO205 whole cell lysates, The lane on the left is treated with the antigen-specific peptide.