

## Product datasheet for **TA325357**

### CEBP Beta (CEBPB) Rabbit Polyclonal Antibody

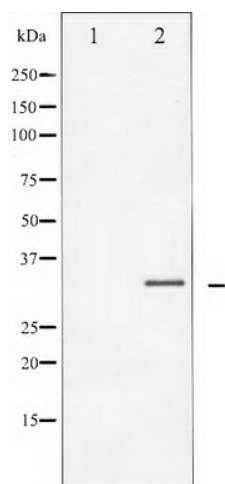
#### Product data:

Product Type:	Primary Antibodies
Applications:	WB
Recommended Dilution:	WB: 1:500-1:2000; IHC: 1:50-1:200
Reactivity:	Human, Mouse, Rat
Host:	Rabbit
Isotype:	IgG
Clonality:	Polyclonal
Immunogen:	The antiserum was produced against A synthesized peptide derived from human C/EBP-beta
Formulation:	Rabbit IgG in phosphate buffered saline , pH 7.4, 150mM NaCl, 0.02% sodium azide and 50% glycerol.
Concentration:	lot specific
Purification:	The antibody was affinity-purified from rabbit antiserum by affinity-chromatography using epitope-specific peptide.
Conjugation:	Unconjugated
Storage:	Store at -20°C as received.
Stability:	Stable for 12 months from date of receipt.
Predicted Protein Size:	36 kDa
Gene Name:	CCAAT/enhancer binding protein beta
Database Link:	<a href="#">NP_005185</a> <a href="#">Entrez Gene 12608 Mouse</a> <a href="#">Entrez Gene 24253 Rat</a> <a href="#">Entrez Gene 1051 Human</a> <a href="#">P17676</a>
Background:	The protein encoded by this intronless gene is a bZIP transcription factor which can bind as a homodimer to certain DNA regulatory regions. It can also form heterodimers with the related proteins CEBP-alpha, CEBP-delta, and CEBP-gamma.
Synonyms:	C; EBP-beta; IL6DBP; NF-IL6; TCF5
Protein Families:	Druggable Genome, ES Cell Differentiation/IPS, Transcription Factors



[View online »](#)

## Product images:



Western blot analysis of C/EBP-beta expression in NIH-3T3 whole cell lysates, The lane on the left is treated with the antigen-specific peptide.