

## Product datasheet for **TA325355**

### CEBP Alpha (CEBPA) Rabbit Polyclonal Antibody

#### Product data:

Product Type:	Primary Antibodies
Applications:	WB
Recommended Dilution:	WB: 1:500-1:2000; IHC: 1:50-1:200
Reactivity:	Human, Mouse, Rat
Host:	Rabbit
Isotype:	IgG
Clonality:	Polyclonal
Immunogen:	The antiserum was produced against A synthesized peptide derived from human C/EBP-alpha
Formulation:	Rabbit IgG in phosphate buffered saline , pH 7.4, 150mM NaCl, 0.02% sodium azide and 50% glycerol.
Concentration:	lot specific
Purification:	The antibody was affinity-purified from rabbit antiserum by affinity-chromatography using epitope-specific peptide.
Conjugation:	Unconjugated
Storage:	Store at -20°C as received.
Stability:	Stable for 12 months from date of receipt.
Predicted Protein Size:	30,43 kDa
Gene Name:	CCAAT/enhancer binding protein alpha
Database Link:	<a href="#">NP_004355</a> <a href="#">Entrez Gene 12606 Mouse</a> <a href="#">Entrez Gene 24252 Rat</a> <a href="#">Entrez Gene 1050 Human P49715</a>
Background:	The protein encoded by this intronless gene is a bZIP transcription factor which can bind as a homodimer to certain promoters and enhancers. It can also form heterodimers with the related proteins CEBP-beta and CEBP-gamma. The encoded protein has been shown to bind to the promoter and modulate the expression of the gene encoding leptin, a protein that plays an important role in body weight homeostasis.
Synonyms:	C; CEBP; EBP-alpha

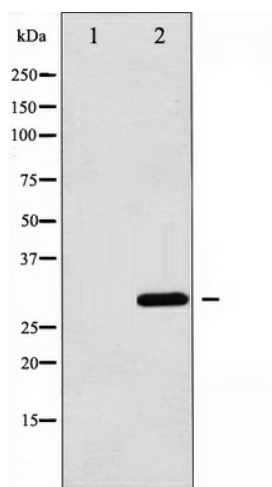


[View online »](#)

**Protein Families:** Druggable Genome, ES Cell Differentiation/IPS

**Protein Pathways:** Acute myeloid leukemia, Pathways in cancer

**Product images:**



Western blot analysis of C/EBP-alpha expression in 293 whole cell lysates, The lane on the left is treated with the antigen-specific peptide.