

Product datasheet for **TA325351**

p27 KIP 1 (CDKN1B) Rabbit Polyclonal Antibody

Product data:

Product Type:	Primary Antibodies
Applications:	WB
Recommended Dilution:	WB: 1:500-1:2000
Reactivity:	Human, Mouse, Rat
Modifications:	Phospho-specific
Host:	Rabbit
Isotype:	IgG
Clonality:	Polyclonal
Immunogen:	The antiserum was produced against A synthesized peptide derived from human p27 Kip1 around the phosphorylation site of Serine 10
Formulation:	Rabbit IgG in phosphate buffered saline , pH 7.4, 150mM NaCl, 0.02% sodium azide and 50% glycerol.
Concentration:	lot specific
Purification:	The antibody was affinity-purified from rabbit antiserum by affinity-chromatography using epitope-specific peptide.
Conjugation:	Unconjugated
Storage:	Store at -20°C as received.
Stability:	Stable for 12 months from date of receipt.
Predicted Protein Size:	27 kDa
Gene Name:	cyclin-dependent kinase inhibitor 1B
Database Link:	NP_004055 Entrez Gene 12576 MouseEntrez Gene 83571 RatEntrez Gene 1027 Human P46527
Background:	This gene encodes a cyclin-dependent kinase inhibitor, which shares a limited similarity with CDK inhibitor CDKN1A/p21. The encoded protein binds to and prevents the activation of cyclin E-CDK2 or cyclin D-CDK4 complexes, and thus controls the cell cycle progression at G1.
Synonyms:	CDKN4; KIP1; MEN1B; MEN4; P27KIP1

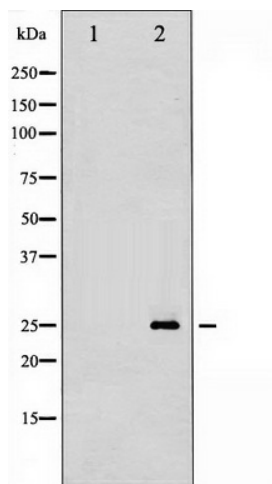


[View online »](#)

Protein Families: Druggable Genome

Protein Pathways: Cell cycle, Chronic myeloid leukemia, ErbB signaling pathway, Pathways in cancer, Prostate cancer, Small cell lung cancer

Product images:



Western blot analysis of p27 Kip1 phosphorylation expression in A2780 whole cell lysates, The lane on the left is treated with the antigen-specific peptide.