

Product datasheet for **TA325347**

CDK5 Rabbit Polyclonal Antibody

Product data:

Product Type:	Primary Antibodies
Applications:	WB
Recommended Dilution:	WB: 1:500-1:2000
Reactivity:	Human, Mouse, Rat
Modifications:	Phospho-specific
Host:	Rabbit
Isotype:	IgG
Clonality:	Polyclonal
Immunogen:	The antiserum was produced against A synthesized peptide derived from human CDK5 around the phosphorylation site of Tyrosine 15
Formulation:	Rabbit IgG in phosphate buffered saline , pH 7.4, 150mM NaCl, 0.02% sodium azide and 50% glycerol.
Concentration:	lot specific
Purification:	The antibody was affinity-purified from rabbit antiserum by affinity-chromatography using epitope-specific peptide.
Conjugation:	Unconjugated
Storage:	Store at -20°C as received.
Stability:	Stable for 12 months from date of receipt.
Predicted Protein Size:	33 kDa
Gene Name:	cyclin-dependent kinase 5
Database Link:	NP_001157882 Entrez Gene 12568 MouseEntrez Gene 140908 RatEntrez Gene 1020 Human Q00535
Background:	CDK5 is a protein kinase of the CDK family. Unlike other members of this family, it is not activated by cyclins but by p35 (CDK5R1) and p39. An important regulator of neuronal positioning during brain development. May also play a role in synaptogenesis and neurotransmission.



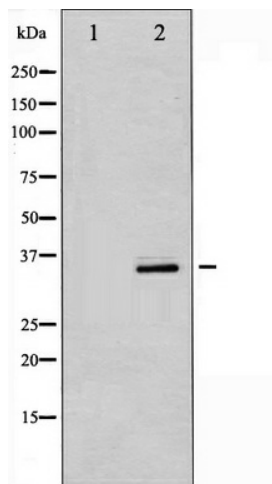
[View online »](#)

Synonyms: PSSALRE

Protein Families: Druggable Genome, Protein Kinase

Protein Pathways: Alzheimer's disease, Axon guidance

Product images:



Western blot analysis of CDK5 phosphorylation expression in EGF treated COS7 whole cell lysates, The lane on the left is treated with the antigen-specific peptide.