

Product datasheet for **TA325346**

CDK5 Rabbit Polyclonal Antibody

Product data:

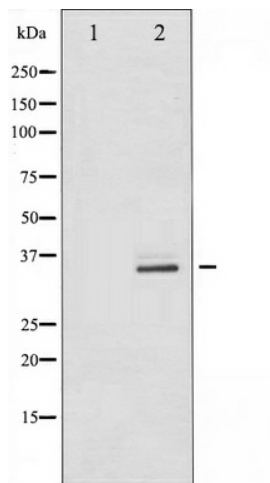
Product Type:	Primary Antibodies
Applications:	WB
Recommended Dilution:	WB: 1:500-1:2000; IHC: 1:50-1:200
Reactivity:	Human, Mouse, Rat
Host:	Rabbit
Isotype:	IgG
Clonality:	Polyclonal
Immunogen:	The antiserum was produced against A synthesized peptide derived from human CDK5
Formulation:	Rabbit IgG in phosphate buffered saline , pH 7.4, 150mM NaCl, 0.02% sodium azide and 50% glycerol.
Concentration:	lot specific
Purification:	The antibody was affinity-purified from rabbit antiserum by affinity-chromatography using epitope-specific peptide.
Conjugation:	Unconjugated
Storage:	Store at -20°C as received.
Stability:	Stable for 12 months from date of receipt.
Predicted Protein Size:	33 kDa
Gene Name:	cyclin-dependent kinase 5
Database Link:	NP_001157882 Entrez Gene 12568 Mouse Entrez Gene 140908 Rat Entrez Gene 1020 Human Q00535
Background:	CDK5 is a protein kinase of the CDK family. Unlike other members of this family, it is not activated by cyclins but by p35 (CDK5R1) and p39. An important regulator of neuronal positioning during brain development. May also play a role in synaptogenesis and neurotransmission.
Synonyms:	PSSALRE
Protein Families:	Druggable Genome, Protein Kinase



[View online »](#)

Protein Pathways: Alzheimer's disease, Axon guidance

Product images:



Western blot analysis of CDK5 expression in HepG2 whole cell lysates, The lane on the left is treated with the antigen-specific peptide.