

## Product datasheet for **TA325342**

### CDK2 Rabbit Polyclonal Antibody

#### Product data:

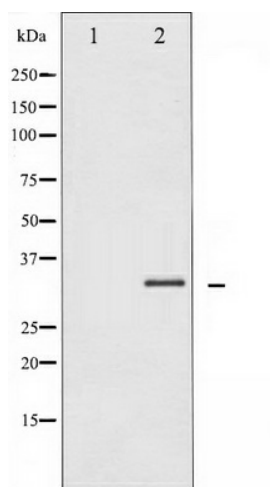
Product Type:	Primary Antibodies
Applications:	WB
Recommended Dilution:	WB: 1:500-1:2000
Reactivity:	Human, Mouse, Rat
Host:	Rabbit
Isotype:	IgG
Clonality:	Polyclonal
Immunogen:	The antiserum was produced against A synthesized peptide derived from human CDK1/CDC2
Formulation:	Rabbit IgG in phosphate buffered saline , pH 7.4, 150mM NaCl, 0.02% sodium azide and 50% glycerol.
Concentration:	lot specific
Purification:	The antibody was affinity-purified from rabbit antiserum by affinity-chromatography using epitope-specific peptide.
Conjugation:	Unconjugated
Storage:	Store at -20°C as received.
Stability:	Stable for 12 months from date of receipt.
Predicted Protein Size:	34 kDa
Gene Name:	cyclin-dependent kinase 2
Database Link:	<a href="#">NP_001789</a> <a href="#">Entrez Gene 12566 Mouse</a> <a href="#">Entrez Gene 362817 Rat</a> <a href="#">Entrez Gene 1017 Human</a> <a href="#">P24941</a>
Background:	The protein encoded by this gene is a member of the Ser/Thr protein kinase family. This protein is a catalytic subunit of the highly conserved protein kinase complex known as M-phase promoting factor (MPF), which is essential for G1/S and G2/M phase transitions of eukaryotic cell cycle.
Synonyms:	CDKN2; p33(CDK2)
Protein Families:	Druggable Genome, Protein Kinase



[View online »](#)

**Protein Pathways:**

Cell cycle, Oocyte meiosis, p53 signaling pathway, Pathways in cancer, Progesterone-mediated oocyte maturation, Prostate cancer, Small cell lung cancer

**Product images:**

Western blot analysis of CDK1/CDC2 xpression in Forskolin treated HepG2 whole cell lysates, The lane on the left is treated with the antigen-specific peptide.