

Product datasheet for **TA325336**

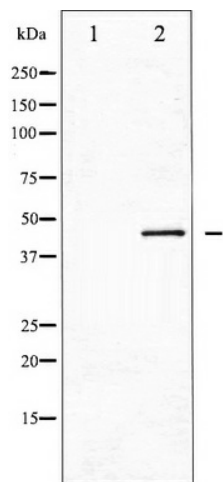
CDC37 Rabbit Polyclonal Antibody

Product data:

Product Type:	Primary Antibodies
Applications:	WB
Recommended Dilution:	WB: 1:500-1:2000; IHC: 1:50-1:200
Reactivity:	Human, Mouse, Rat
Modifications:	Phospho-specific
Host:	Rabbit
Isotype:	IgG
Clonality:	Polyclonal
Immunogen:	The antiserum was produced against A synthesized peptide derived from human CDC37 around the phosphorylation site of Serine 13
Formulation:	Rabbit IgG in phosphate buffered saline , pH 7.4, 150mM NaCl, 0.02% sodium azide and 50% glycerol.
Concentration:	lot specific
Purification:	The antibody was affinity-purified from rabbit antiserum by affinity-chromatography using epitope-specific peptide.
Conjugation:	Unconjugated
Storage:	Store at -20°C as received.
Stability:	Stable for 12 months from date of receipt.
Predicted Protein Size:	44 kDa
Gene Name:	cell division cycle 37
Database Link:	NP_008996 Entrez Gene 12539 MouseEntrez Gene 114562 RatEntrez Gene 11140 Human Q16543
Background:	The protein encoded by this gene is highly similar to Cdc 37, a cell division cycle control protein of <i>Sacchomyces cerevisiae</i> . This protein is a molecular chaperone with specific function in cell signal transduction.
Synonyms:	P50CDC37



[View online »](#)

Product images:

Western blot analysis of CDC37 phosphorylation expression in NIH-3T3 whole cell lysates, The lane on the left is treated with the antigen-specific peptide.