

Product datasheet for **TA325329**

CDC25B Rabbit Polyclonal Antibody

Product data:

| | |
|-------------------------|---|
| Product Type: | Primary Antibodies |
| Applications: | WB |
| Recommended Dilution: | WB: 1:500-1:2000; IF/ICC: 1:100-1:500 |
| Reactivity: | Human, Mouse, Rat |
| Host: | Rabbit |
| Isotype: | IgG |
| Clonality: | Polyclonal |
| Immunogen: | The antiserum was produced against A synthesized peptide derived from human CDC25B |
| Formulation: | Rabbit IgG in phosphate buffered saline , pH 7.4, 150mM NaCl, 0.02% sodium azide and 50% glycerol. |
| Concentration: | lot specific |
| Purification: | The antibody was affinity-purified from rabbit antiserum by affinity-chromatography using epitope-specific peptide. |
| Conjugation: | Unconjugated |
| Storage: | Store at -20°C as received. |
| Stability: | Stable for 12 months from date of receipt. |
| Predicted Protein Size: | 65 kDa |
| Gene Name: | cell division cycle 25B |
| Database Link: | NP_004349 Entrez Gene 12531 Mouse Entrez Gene 171103 Rat Entrez Gene 994 Human P30305 |
| Background: | CDC25B is a member of the CDC25 family of phosphatases. CDC25B activates the cyclin dependent kinase CDC2 by removing two phosphate groups and it is required for entry into mitosis. CDC25B shuttles between the nucleus and the cytoplasm due to nuclear localization and nuclear export signals. |
| Synonyms: | cell division cycle 25 homolog B (S. pombe); cell division cycle 25B; OTTHUMP00000030137; OTTHUMP00000030138; OTTHUMP00000030139 |

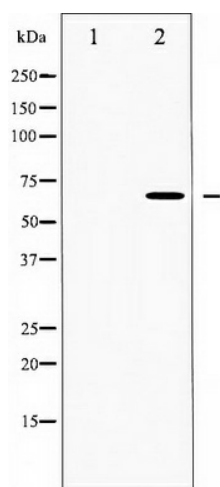


[View online »](#)

Protein Families: Druggable Genome, Phosphatase

Protein Pathways: Cell cycle, MAPK signaling pathway, Progesterone-mediated oocyte maturation

Product images:



Western blot analysis of CDC25B expression in RAW264.7 whole cell lysates, The lane on the left is treated with the antigen-specific peptide.