

Product datasheet for **TA325328**

CDC25A Rabbit Polyclonal Antibody

Product data:

Product Type:	Primary Antibodies
Applications:	IHC, WB
Recommended Dilution:	WB: 1:500-1:2000; IHC: 1:50-1:200
Reactivity:	Human, Mouse, Rat
Modifications:	Phospho-specific
Host:	Rabbit
Isotype:	IgG
Clonality:	Polyclonal
Immunogen:	The antiserum was produced against a synthesized A synthesized peptide derived from human CDC25A around the phosphorylation site of Sersine 75.
Formulation:	Rabbit IgG in phosphate buffered saline , pH 7.4, 150mM NaCl, 0.02% sodium azide and 50% glycerol.
Concentration:	lot specific
Purification:	The antibody was affinity-purified from rabbit antiserum by affinity-chromatography using epitope-specific peptide.
Conjugation:	Unconjugated
Storage:	Store at -20°C as received.
Stability:	Stable for 12 months from date of receipt.
Gene Name:	cell division cycle 25A
Database Link:	NP_001780 Entrez Gene 12530 Mouse Entrez Gene 171102 Rat Entrez Gene 993 Human P30304



[View online »](#)

Background:

CDC25A is a member of the CDC25 family of phosphatases. CDC25A is required for progression from G1 to the S phase of the cell cycle. It activates the cyclin-dependent kinase CDC2 by removing two phosphate groups. CDC25A is specifically degraded in response to DNA damage, which prevents cells with chromosomal abnormalities from progressing through cell division. CDC25A is an oncogene, although its exact role in oncogenesis has not been demonstrated. Two transcript variants encoding different isoforms have been found for this gene.

Synonyms:

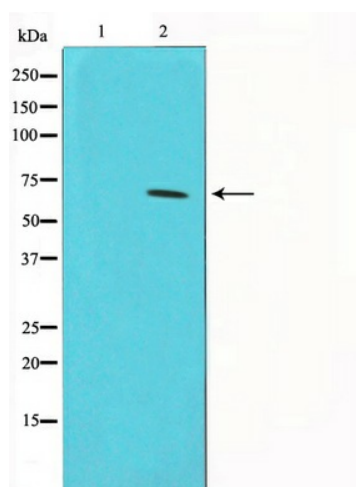
CDC25A2

Protein Families:

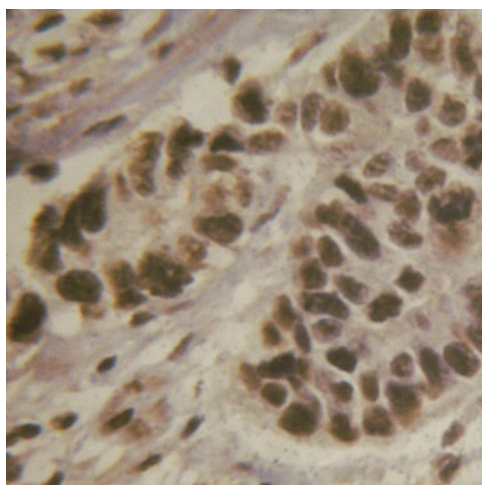
Druggable Genome, Phosphatase

Protein Pathways:

Cell cycle, Progesterone-mediated oocyte maturation

Product images:

Western blot analysis on HeLa cell lysate using Phospho-CDC25A (Ser75) Antibody.



Immunohistochemical analysis of paraffin-embedded human lung carcinoma using Phospho- CDC25A (Ser75) Antibody.