

## Product datasheet for **TA325326**

### CDC25A Rabbit Polyclonal Antibody

#### Product data:

Product Type:	Primary Antibodies
Applications:	WB
Recommended Dilution:	WB: 1:500-1:2000; IHC: 1:50-1:200
Reactivity:	Human, Mouse, Rat
Modifications:	Phospho-specific
Host:	Rabbit
Isotype:	IgG
Clonality:	Polyclonal
Immunogen:	The antiserum was produced against A synthesized peptide derived from human CDC25A around the phosphorylation site of Serine 178
Formulation:	Rabbit IgG in phosphate buffered saline , pH 7.4, 150mM NaCl, 0.02% sodium azide and 50% glycerol.
Concentration:	lot specific
Purification:	The antibody was affinity-purified from rabbit antiserum by affinity-chromatography using epitope-specific peptide.
Conjugation:	Unconjugated
Storage:	Store at -20°C as received.
Stability:	Stable for 12 months from date of receipt.
Predicted Protein Size:	59 kDa
Gene Name:	cell division cycle 25A
Database Link:	<a href="#">NP_001780</a> <a href="#">Entrez Gene 12530 MouseEntrez Gene 171102 RatEntrez Gene 993 Human P30304</a>
Background:	CDC25A is a member of the CDC25 family of phosphatases. CDC25A is required for progression from G1 to the S phase of the cell cycle. It activates the cyclin-dependent kinase CDC2 by removing two phosphate groups.
Synonyms:	CDC25A2

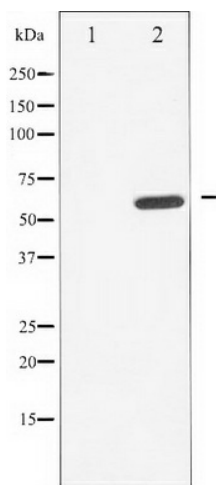


[View online »](#)

**Protein Families:** Druggable Genome, Phosphatase

**Protein Pathways:** Cell cycle, Progesterone-mediated oocyte maturation

**Product images:**



Western blot analysis of CDC25A phosphorylation expression in UV treated A549 whole cell lysates, The lane on the left is treated with the antigen-specific peptide.