

## Product datasheet for **TA325321**

### CD19 Rabbit Polyclonal Antibody

#### Product data:

Product Type:	Primary Antibodies
Applications:	WB
Recommended Dilution:	WB: 1:500-1:2000
Reactivity:	Human, Mouse
Modifications:	Phospho-specific
Host:	Rabbit
Isotype:	IgG
Clonality:	Polyclonal
Immunogen:	The antiserum was produced against A synthesized peptide derived from human CD19 around the phosphorylation site of Tyrosine 531
Formulation:	Rabbit IgG in phosphate buffered saline , pH 7.4, 150mM NaCl, 0.02% sodium azide and 50% glycerol.
Concentration:	lot specific
Purification:	The antibody was affinity-purified from rabbit antiserum by affinity-chromatography using epitope-specific peptide.
Conjugation:	Unconjugated
Storage:	Store at -20°C as received.
Stability:	Stable for 12 months from date of receipt.
Predicted Protein Size:	61 kDa
Gene Name:	CD19 molecule
Database Link:	<a href="#">NP_001171569</a> <a href="#">Entrez Gene 12478 Mouse</a> <a href="#">Entrez Gene 930 Human</a> <a href="#">P15391</a>
Background:	CD19 a cell surface molecule which assembles with the antigen receptor of B lymphocytes. A critical signal transduction molecule that regulates B lymphocyte development, activation, and differentiation.
Synonyms:	B4; CVID3

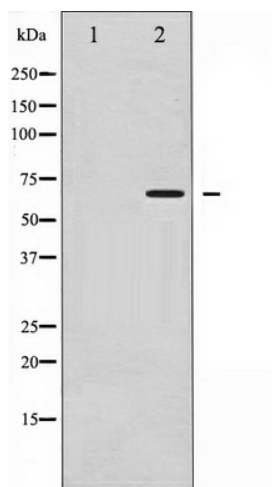


[View online »](#)

**Protein Families:** Druggable Genome, Transmembrane

**Protein Pathways:** B cell receptor signaling pathway, Hematopoietic cell lineage, Primary immunodeficiency

**Product images:**



Western blot analysis of CD19 phosphorylation expression in Serum treated COS7 whole cell lysates, The lane on the left is treated with the antigen-specific peptide.