

## Product datasheet for **TA325313**

### Cyclin D3 (CCND3) Rabbit Polyclonal Antibody

#### Product data:

Product Type:	Primary Antibodies
Applications:	WB
Recommended Dilution:	WB: 1:500-1:2000; IHC: 1:50-1:200
Reactivity:	Human, Mouse, Rat
Modifications:	Phospho-specific
Host:	Rabbit
Isotype:	IgG
Clonality:	Polyclonal
Immunogen:	The antiserum was produced against A synthesized peptide derived from human Cyclin D3 around the phosphorylation site of Threonine 283
Formulation:	Rabbit IgG in phosphate buffered saline , pH 7.4, 150mM NaCl, 0.02% sodium azide and 50% glycerol.
Concentration:	lot specific
Purification:	The antibody was affinity-purified from rabbit antiserum by affinity-chromatography using epitope-specific peptide.
Conjugation:	Unconjugated
Storage:	Store at -20°C as received.
Stability:	Stable for 12 months from date of receipt.
Predicted Protein Size:	31 kDa
Gene Name:	cyclin D3
Database Link:	<a href="#">NP_001129489</a> <a href="#">Entrez Gene 12445 MouseEntrez Gene 25193 RatEntrez Gene 896 Human P30281</a>
Background:	CCND3 Regulatory component of the cyclin D3-CDK4 (DC) complex that phosphorylates and inhibits members of the retinoblastoma (RB) protein family including RB1 and regulates the cell-cycle during G(1)/S transition.
Synonyms:	cyclin D3; D3-type cyclin; G1; OTTHUMP00000016390; S-specific cyclin D3

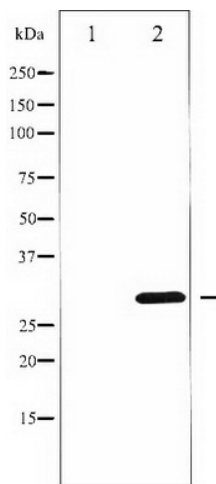


[View online »](#)

Protein Families: Druggable Genome

Protein Pathways: Cell cycle, Focal adhesion, Jak-STAT signaling pathway, p53 signaling pathway, Wnt signaling pathway

### Product images:



Western blot analysis of Cyclin D3 phosphorylation expression in UV treated K562 whole cell lysates, The lane on the left is treated with the antigen-specific peptide.