

Product datasheet for **TA325312**

Cyclin D3 (CCND3) Rabbit Polyclonal Antibody

Product data:

Product Type:	Primary Antibodies
Applications:	WB
Recommended Dilution:	WB: 1:500-1:2000; IHC: 1:50-1:200; IF/ICC: 1:100-1:500
Reactivity:	Mouse, Rat, Human
Modifications:	Phospho-specific
Host:	Rabbit
Isotype:	IgG
Clonality:	Polyclonal
Immunogen:	The antiserum was produced against synthesized peptide derived from human Cyclin D1 around the phosphorylation site of Thr286.
Formulation:	Rabbit IgG in phosphate buffered saline , pH 7.4, 150mM NaCl, 0.02% sodium azide and 50% glycerol.
Concentration:	lot specific
Purification:	The antibody was affinity-purified from rabbit antiserum by affinity-chromatography using epitope-specific peptide.
Conjugation:	Unconjugated
Storage:	Store at -20°C as received.
Stability:	Stable for 12 months from date of receipt.
Predicted Protein Size:	33 kDa
Gene Name:	cyclin D3
Database Link:	NP_001129489 Entrez Gene 12445 MouseEntrez Gene 25193 RatEntrez Gene 896 Human P30281
Background:	The protein encoded by this gene belongs to the highly conserved cyclin family, whose members are characterized by a dramatic periodicity in protein abundance throughout the cell cycle. Cyclins function as regulators of CDK kinases. Different cyclins exhibit distinct expression and degradation patterns which contribute to the temporal coordination of each mitotic event.

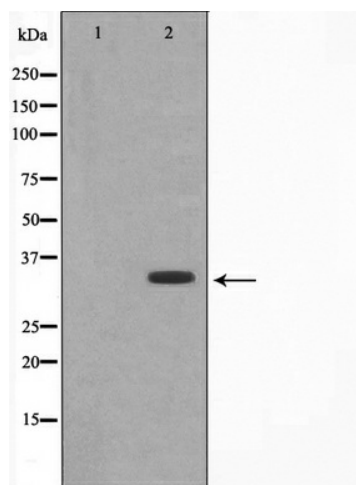


[View online »](#)

Synonyms: cyclin D3; D3-type cyclin; G1; OTTHUMP00000016390; S-specific cyclin D3

Protein Families: Druggable Genome

Protein Pathways: Cell cycle, Focal adhesion, Jak-STAT signaling pathway, p53 signaling pathway, Wnt signaling pathway

Product images:

Western blot analysis of extracts from Jurkat cells, using Cyclin D1 (Phospho-Thr286) Antibody. The lane on the left is treated with the synthesized peptide.