

Product datasheet for **TA325307**

Cyclin B1 (CCNB1) Rabbit Polyclonal Antibody

Product data:

Product Type:	Primary Antibodies
Applications:	WB
Recommended Dilution:	WB: 1:500-1:2000; IHC: 1:50-1:200
Reactivity:	Human, Mouse, Rat
Modifications:	Phospho-specific
Host:	Rabbit
Isotype:	IgG
Clonality:	Polyclonal
Immunogen:	The antiserum was produced against A synthesized peptide derived from human Cyclin B1 around the phosphorylation site of Serine 126
Formulation:	Rabbit IgG in phosphate buffered saline , pH 7.4, 150mM NaCl, 0.02% sodium azide and 50% glycerol.
Concentration:	lot specific
Purification:	The antibody was affinity-purified from rabbit antiserum by affinity-chromatography using epitope-specific peptide.
Conjugation:	Unconjugated
Storage:	Store at -20°C as received.
Stability:	Stable for 12 months from date of receipt.
Predicted Protein Size:	60 kDa
Gene Name:	cyclin B1
Database Link:	NP_114172 Entrez Gene 25203 Rat Entrez Gene 268697 Mouse Entrez Gene 891 Human P14635
Background:	a member of the highly conserved cyclin family, whose members are characterized by a dramatic periodicity in protein abundance through the cell cycle. Cyclins function as regulators of CDK kinases.
Synonyms:	CCNB

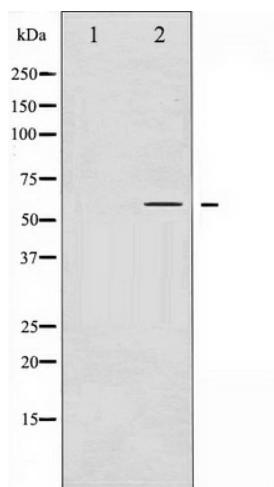


[View online »](#)

Protein Families: Druggable Genome, Stem cell - Pluripotency

Protein Pathways: Cell cycle, Oocyte meiosis, p53 signaling pathway, Progesterone-mediated oocyte maturation

Product images:



Western blot analysis of Cyclin B1 phosphorylation expression in EGF treated NIH-3T3 whole cell lysates, The lane on the left is treated with the antigen-specific peptide.