

## Product datasheet for **TA325306**

### Cyclin B1 (CCNB1) Rabbit Polyclonal Antibody

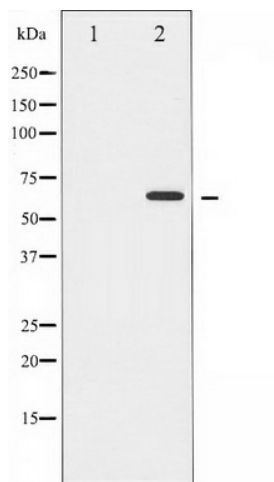
#### Product data:

Product Type:	Primary Antibodies
Applications:	WB
Recommended Dilution:	WB: 1:500-1:2000; IHC: 1:50-1:200; IF/ICC: 1:100-1:500
Reactivity:	Human, Mouse, Rat
Host:	Rabbit
Isotype:	IgG
Clonality:	Polyclonal
Immunogen:	The antiserum was produced against A synthesized peptide derived from human Cyclin B1
Formulation:	Rabbit IgG in phosphate buffered saline , pH 7.4, 150mM NaCl, 0.02% sodium azide and 50% glycerol.
Concentration:	lot specific
Purification:	The antibody was affinity-purified from rabbit antiserum by affinity-chromatography using epitope-specific peptide.
Conjugation:	Unconjugated
Storage:	Store at -20°C as received.
Stability:	Stable for 12 months from date of receipt.
Predicted Protein Size:	60 kDa
Gene Name:	cyclin B1
Database Link:	<a href="#">NP_114172</a> <a href="#">Entrez Gene 25203 Rat</a> <a href="#">Entrez Gene 268697 Mouse</a> <a href="#">Entrez Gene 891 Human</a> <a href="#">P14635</a>
Background:	a member of the highly conserved cyclin family, whose members are characterized by a dramatic periodicity in protein abundance through the cell cycle. Cyclins function as regulators of CDK kinases.
Synonyms:	CCNB
Protein Families:	Druggable Genome, Stem cell - Pluripotency
Protein Pathways:	Cell cycle, Oocyte meiosis, p53 signaling pathway, Progesterone-mediated oocyte maturation



[View online »](#)

## Product images:



Western blot analysis of Cyclin B1 expression in serum treated HeLa whole cell lysates, The lane on the left is treated with the antigen-specific peptide.