

## Product datasheet for **TA325304**

### CBL Rabbit Polyclonal Antibody

#### Product data:

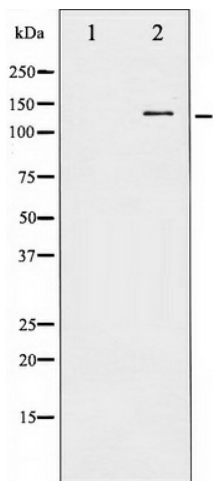
Product Type:	Primary Antibodies
Applications:	WB
Recommended Dilution:	WB: 1:500-1:2000; IHC: 1:50-1:200
Reactivity:	Human, Mouse, Rat
Modifications:	Phospho-specific
Host:	Rabbit
Isotype:	IgG
Clonality:	Polyclonal
Immunogen:	The antiserum was produced against A synthesized peptide derived from human CBL around the phosphorylation site of Tyrosine 674
Formulation:	Rabbit IgG in phosphate buffered saline , pH 7.4, 150mM NaCl, 0.02% sodium azide and 50% glycerol.
Concentration:	lot specific
Purification:	The antibody was affinity-purified from rabbit antiserum by affinity-chromatography using epitope-specific peptide.
Conjugation:	Unconjugated
Storage:	Store at -20°C as received.
Stability:	Stable for 12 months from date of receipt.
Predicted Protein Size:	120 kDa
Gene Name:	Cbl proto-oncogene
Database Link:	<a href="#">NP_005179</a> <a href="#">Entrez Gene 12402 MouseEntrez Gene 500985 RatEntrez Gene 867 Human P22681</a>
Background:	Cbl an adapter protein that functions as a negative regulator of many signaling pathways that start from receptors at the cell surface.
Synonyms:	C-CBL; CBL2; FRA11B; NSLL; RNF55
Protein Families:	Druggable Genome, Transcription Factors



[View online »](#)

**Protein Pathways:** Chronic myeloid leukemia, Endocytosis, ErbB signaling pathway, Insulin signaling pathway, Jak-STAT signaling pathway, Pathways in cancer, T cell receptor signaling pathway, Ubiquitin mediated proteolysis

**Product images:**



Western blot analysis of CBL phosphorylation expression in Na<sub>2</sub>VO<sub>3</sub> treated HepG2 whole cell lysates, The lane on the left is treated with the antigen-specific peptide.