

## Product datasheet for **TA325302**

### Caveolin 1 (CAV1) Rabbit Polyclonal Antibody

#### Product data:

Product Type:	Primary Antibodies
Applications:	WB
Recommended Dilution:	WB: 1:500-1:2000
Reactivity:	Human, Mouse, Rat
Modifications:	Phospho-specific
Host:	Rabbit
Isotype:	IgG
Clonality:	Polyclonal
Immunogen:	The antiserum was produced against A synthesized peptide derived from human Caveolin-1 around the phosphorylation site of Tyrosine 14
Formulation:	Rabbit IgG in phosphate buffered saline , pH 7.4, 150mM NaCl, 0.02% sodium azide and 50% glycerol.
Concentration:	lot specific
Purification:	The antibody was affinity-purified from rabbit antiserum by affinity-chromatography using epitope-specific peptide.
Conjugation:	Unconjugated
Storage:	Store at -20°C as received.
Stability:	Stable for 12 months from date of receipt.
Predicted Protein Size:	23 kDa
Gene Name:	caveolin 1
Database Link:	<a href="#">NP_001166366</a> <a href="#">Entrez Gene 12389 MouseEntrez Gene 25404 RatEntrez Gene 857 Human Q03135</a>
Background:	caveolin-1 May act as a scaffolding protein within caveolar membranes. Interacts directly with G-protein alpha subunits and can functionally regulate their activity. Involved in the costimulatory signal essential for T-cell receptor (TCR)- mediated T-cell activation.
Synonyms:	BSCL3; CGL3; LCCNS; MSTP085; PPH3; VIP21

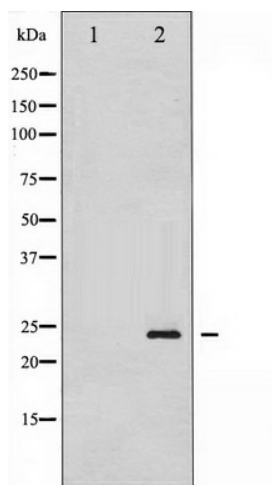


[View online »](#)

Protein Families: Druggable Genome, Transmembrane

Protein Pathways: Focal adhesion, Viral myocarditis

**Product images:**



Western blot analysis of Caveolin-1 phosphorylation expression in H<sub>2</sub>O<sub>2</sub> treated NIH-3T3 whole cell lysates, The lane on the left is treated with the antigen-specific peptide.