

Product datasheet for **TA325301**

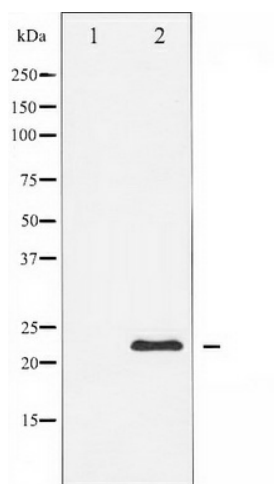
Caveolin 1 (CAV1) Rabbit Polyclonal Antibody

Product data:

Product Type:	Primary Antibodies
Applications:	WB
Recommended Dilution:	WB: 1:500-1:2000
Reactivity:	Human, Mouse, Rat
Host:	Rabbit
Isotype:	IgG
Clonality:	Polyclonal
Immunogen:	The antiserum was produced against A synthesized peptide derived from human Caveolin-1
Formulation:	Rabbit IgG in phosphate buffered saline , pH 7.4, 150mM NaCl, 0.02% sodium azide and 50% glycerol.
Concentration:	lot specific
Purification:	The antibody was affinity-purified from rabbit antiserum by affinity-chromatography using epitope-specific peptide.
Conjugation:	Unconjugated
Storage:	Store at -20°C as received.
Stability:	Stable for 12 months from date of receipt.
Predicted Protein Size:	23 kDa
Gene Name:	caveolin 1
Database Link:	NP_001166366 Entrez Gene 12389 Mouse Entrez Gene 25404 Rat Entrez Gene 857 Human Q03135
Background:	caveolin-1 May act as a scaffolding protein within caveolar membranes. Interacts directly with G-protein alpha subunits and can functionally regulate their activity. Involved in the costimulatory signal essential for T-cell receptor (TCR)- mediated T-cell activation.
Synonyms:	BSCL3; CGL3; LCCNS; MSTP085; PPH3; VIP21
Protein Families:	Druggable Genome, Transmembrane
Protein Pathways:	Focal adhesion, Viral myocarditis



[View online »](#)

Product images:

Western blot analysis of Caveolin-1 expression in NIH-3T3 whole cell lysates, The lane on the left is treated with the antigen-specific peptide.