

## Product datasheet for **TA325300**

### Calcium Sensing Receptor (CASR) Rabbit Polyclonal Antibody

#### Product data:

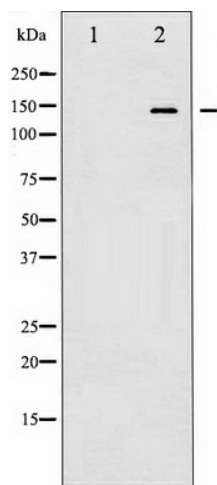
Product Type:	Primary Antibodies
Applications:	WB
Recommended Dilution:	WB: 1:500-1:2000; IF/ICC: 1:100-1:500
Reactivity:	Human, Mouse, Rat
Modifications:	Phospho-specific
Host:	Rabbit
Isotype:	IgG
Clonality:	Polyclonal
Immunogen:	The antiserum was produced against A synthesized peptide derived from human Calcium Sensing Receptor around the phosphorylation site of Threonine 888
Formulation:	Rabbit IgG in phosphate buffered saline , pH 7.4, 150mM NaCl, 0.02% sodium azide and 50% glycerol.
Concentration:	lot specific
Purification:	The antibody was affinity-purified from rabbit antiserum by affinity-chromatography using epitope-specific peptide.
Conjugation:	Unconjugated
Storage:	Store at -20°C as received.
Stability:	Stable for 12 months from date of receipt.
Predicted Protein Size:	140 kDa
Gene Name:	calcium sensing receptor
Database Link:	<a href="#">NP_000379</a> <a href="#">Entrez Gene 12374 MouseEntrez Gene 24247 RatEntrez Gene 846 Human P41180</a>
Background:	The calcium-sensing receptor (CASR) functions as a sensor for parathyroid and kidney to determine the extracellular calcium concentration and thus helps to maintain a stable calcium concentration.
Synonyms:	CAR; EIG8; FHH; FIH; GPRC2A; HHC; HHC1; HYPOC1; NSHPT; PCAR1



[View online »](#)

Protein Families: Druggable Genome, GPCR, Transmembrane

### Product images:



Western blot analysis of Calcium Sensing Receptor phosphorylation expression in LOVO whole cell lysates, The lane on the left is treated with the antigen-specific peptide.