

Product datasheet for **TA325299**

Calcium Sensing Receptor (CASR) Rabbit Polyclonal Antibody

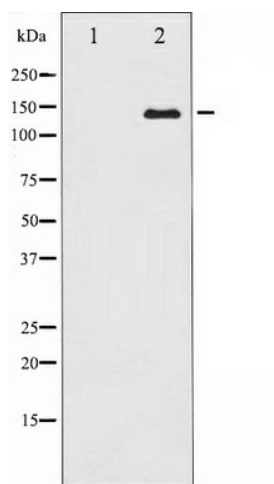
Product data:

Product Type:	Primary Antibodies
Applications:	WB
Recommended Dilution:	WB: 1:500-1:2000; IHC: 1:50-1:200
Reactivity:	Human, Mouse, Rat
Host:	Rabbit
Isotype:	IgG
Clonality:	Polyclonal
Immunogen:	The antiserum was produced against A synthesized peptide derived from human Calcium Sensing Receptor
Formulation:	Rabbit IgG in phosphate buffered saline , pH 7.4, 150mM NaCl, 0.02% sodium azide and 50% glycerol.
Concentration:	lot specific
Purification:	The antibody was affinity-purified from rabbit antiserum by affinity-chromatography using epitope-specific peptide.
Conjugation:	Unconjugated
Storage:	Store at -20°C as received.
Stability:	Stable for 12 months from date of receipt.
Predicted Protein Size:	140 kDa
Gene Name:	calcium sensing receptor
Database Link:	NP_000379 Entrez Gene 12374 Mouse Entrez Gene 24247 Rat Entrez Gene 846 Human P41180
Background:	The calcium-sensing receptor (CASR) functions as a sensor for parathyroid and kidney to determine the extracellular calcium concentration and thus helps to maintain a stable calcium concentration.
Synonyms:	CAR; EIG8; FHH; FIH; GPRC2A; HHC; HHC1; HYPOC1; NSHPT; PCAR1
Protein Families:	Druggable Genome, GPCR, Transmembrane



[View online »](#)

Product images:



Western blot analysis of Calcium Sensing Receptor expression in LOVO whole cell lysates, The lane on the left is treated with the antigen-specific peptide.