

## Product datasheet for **TA325296**

### Caspase 8 (CASP8) Rabbit Polyclonal Antibody

#### Product data:

Product Type:	Primary Antibodies
Applications:	WB
Recommended Dilution:	WB: 1:500-1:2000; IHC: 1:50-1:200
Reactivity:	Human, Rat
Modifications:	Phospho-specific
Host:	Rabbit
Isotype:	IgG
Clonality:	Polyclonal
Immunogen:	The antiserum was produced against A synthesized peptide derived from human Caspase 8 around the phosphorylation site of Serine 347
Formulation:	Rabbit IgG in phosphate buffered saline , pH 7.4, 150mM NaCl, 0.02% sodium azide and 50% glycerol.
Concentration:	lot specific
Purification:	The antibody was affinity-purified from rabbit antiserum by affinity-chromatography using epitope-specific peptide.
Conjugation:	Unconjugated
Storage:	Store at -20°C as received.
Stability:	Stable for 12 months from date of receipt.
Predicted Protein Size:	57 kDa
Gene Name:	caspase 8
Database Link:	<a href="#">NP_001073593</a> <a href="#">Entrez Gene 64044 Rat</a> <a href="#">Entrez Gene 841 Human</a> <a href="#">Q14790</a>



[View online »](#)

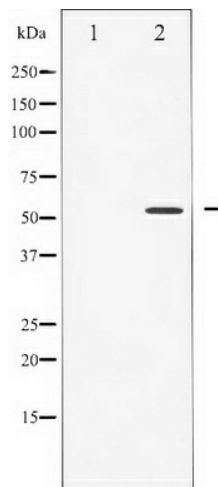
**Background:** This gene encodes a protein that is a member of the cysteine-aspartic acid protease (caspase) family. Sequential activation of caspases plays a central role in the execution-phase of cell apoptosis. Caspases exist as inactive proenzymes composed of a prodomain, a large protease subunit, and a small protease subunit. Activation of caspases requires proteolytic processing at conserved internal aspartic residues to generate a heterodimeric enzyme consisting of the large and small subunits.

**Synonyms:** ALPS2B; CAP4; Casp-8; FLICE; MACH; MCH5

**Protein Families:** Druggable Genome, Protease

**Protein Pathways:** Alzheimer's disease, Apoptosis, Huntington's disease, NOD-like receptor signaling pathway, p53 signaling pathway, Pathways in cancer, RIG-I-like receptor signaling pathway, Toll-like receptor signaling pathway, Viral myocarditis

### Product images:



Western blot analysis of Caspase 8 phosphorylation expression in Jurkat whole cell lysates, The lane on the left is treated with the antigen-specific peptide.