

## Product datasheet for **TA325295**

### Caspase 8 (CASP8) Rabbit Polyclonal Antibody

#### Product data:

|                         |   |
|-------------------------|---|
| Product Type:           | Primary Antibodies  |
| Applications:           | WB  |
| Recommended Dilution:   | WB: 1:500-1:2000; IHC: 1:50-1:200   |
| Reactivity:             | Human, Mouse, Rat   |
| Host:                   | Rabbit  |
| Isotype:                | IgG   |
| Clonality:              | Polyclonal  |
| Immunogen:              | The antiserum was produced against A synthesized peptide derived from human Caspase 8   |
| Formulation:            | Rabbit IgG in phosphate buffered saline , pH 7.4, 150mM NaCl, 0.02% sodium azide and 50% glycerol.  |
| Concentration:          | lot specific  |
| Purification:           | The antibody was affinity-purified from rabbit antiserum by affinity-chromatography using epitope-specific peptide.   |
| Conjugation:            | Unconjugated  |
| Storage:                | Store at -20°C as received.   |
| Stability:              | Stable for 12 months from date of receipt.  |
| Predicted Protein Size: | 55 kDa  |
| Gene Name:              | caspase 8   |
| Database Link:          | <a href="#">NP_203519</a><br><a href="#">Entrez Gene 12370 Mouse</a> <a href="#">Entrez Gene 64044 Rat</a> <a href="#">Entrez Gene 841 Human</a><br><a href="#">Q14790</a>  |
| Background:             | This gene encodes a protein that is a member of the cysteine-aspartic acid protease (caspase) family. Sequential activation of caspases plays a central role in the execution-phase of cell apoptosis. Caspases exist as inactive proenzymes composed of a prodomain, a large protease subunit, and a small protease subunit. Activation of caspases requires proteolytic processing at conserved internal aspartic residues to generate a heterodimeric enzyme consisting of the large and small subunits. |
| Synonyms:               | ALPS2B; CAP4; Casp-8; FLICE; MACH; MCH5   |

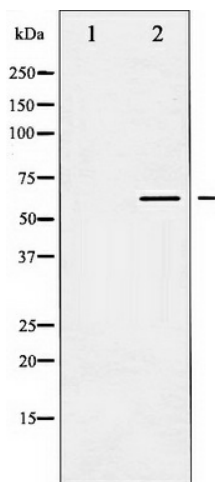


[View online »](#)

**Protein Families:** Druggable Genome, Protease

**Protein Pathways:** Alzheimer's disease, Apoptosis, Huntington's disease, NOD-like receptor signaling pathway, p53 signaling pathway, Pathways in cancer, RIG-I-like receptor signaling pathway, Toll-like receptor signaling pathway, Viral myocarditis

**Product images:**



Western blot analysis of Caspase 8 expression in TNF-a treated NIH-3T3 whole cell lysates, The lane on the left is treated with the antigen-specific peptide.