

Product datasheet for **TA325292**

CAMKIV (CAMK4) Rabbit Polyclonal Antibody

Product data:

Product Type:	Primary Antibodies
Applications:	WB
Recommended Dilution:	WB: 1:500-1:2000; IHC: 1:50-1:200; IF/ICC: 1:100-1:500
Reactivity:	Human, Mouse, Rat
Modifications:	Phospho-specific
Host:	Rabbit
Isotype:	IgG
Clonality:	Polyclonal
Immunogen:	The antiserum was produced against A synthesized peptide derived from human CaMK4 around the phosphorylation site of Threonine 196/200
Formulation:	Rabbit IgG in phosphate buffered saline , pH 7.4, 150mM NaCl, 0.02% sodium azide and 50% glycerol.
Concentration:	lot specific
Purification:	The antibody was affinity-purified from rabbit antiserum by affinity-chromatography using epitope-specific peptide.
Conjugation:	Unconjugated
Storage:	Store at -20°C as received.
Stability:	Stable for 12 months from date of receipt.
Predicted Protein Size:	60 kDa
Gene Name:	calcium/calmodulin-dependent protein kinase IV
Database Link:	NP_001735 Entrez Gene 12326 MouseEntrez Gene 25050 RatEntrez Gene 814 Human Q16566
Background:	The product of this gene belongs to the serine/threonine protein kinase family, and to the Ca(2+)/calmodulin-dependent protein kinase subfamily. This enzyme is a multifunctional serine/threonine protein kinase with limited tissue distribution, that has been implicated in transcriptional regulation in lymphocytes, neurons and male germ cells.



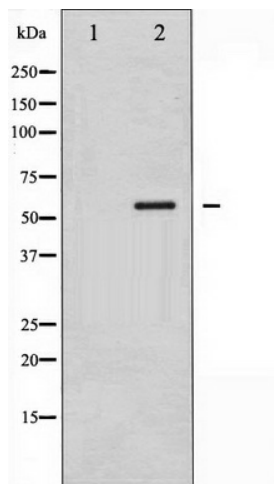
[View online »](#)

Synonyms: caMK; CaMK-GR; CaMK IV; IV

Protein Families: Druggable Genome, Protein Kinase

Protein Pathways: Calcium signaling pathway, Long-term potentiation, Neurotrophin signaling pathway

Product images:



Western blot analysis of CaMK4 phosphorylation expression in H₂O₂ treated K562 whole cell lysates, The lane on the left is treated with the antigen-specific peptide.