

## Product datasheet for TA325290

### CAMK2B Rabbit Polyclonal Antibody

#### Product data:

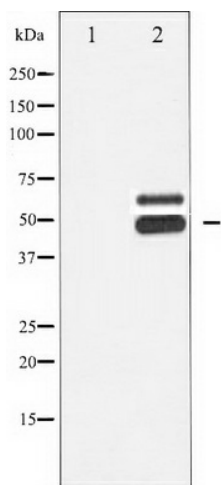
Product Type:	Primary Antibodies
Applications:	WB
Recommended Dilution:	WB: 1:500-1:2000; IHC: 1:50-1:200
Reactivity:	Human, Mouse, Rat
Modifications:	Phospho-specific
Host:	Rabbit
Isotype:	IgG
Clonality:	Polyclonal
Immunogen:	The antiserum was produced against A synthesized peptide derived from human CaMK2-beta/ gamma/ delta around the phosphorylation site of Threonine 287
Formulation:	Rabbit IgG in phosphate buffered saline , pH 7.4, 150mM NaCl, 0.02% sodium azide and 50% glycerol.
Concentration:	lot specific
Purification:	The antibody was affinity-purified from rabbit antiserum by affinity-chromatography using epitope-specific peptide.
Conjugation:	Unconjugated
Storage:	Store at -20°C as received.
Stability:	Stable for 12 months from date of receipt.
Predicted Protein Size:	50+65 kDa
Gene Name:	calcium/calmodulin dependent protein kinase II beta
Database Link:	<a href="#">NP_001211</a> <a href="#">Entrez Gene 12323 MouseEntrez Gene 24245 RatEntrez Gene 816 Human Q13554</a>
Background:	The product of this gene belongs to the serine/threonine protein kinase family and to the Ca(2+)/calmodulin-dependent protein kinase subfamily. Calcium signaling is crucial for several aspects of plasticity at glutamatergic synapses.
Synonyms:	CAM2; CAMK2; CAMKB


[View online »](#)

**Protein Families:** Druggable Genome, Protein Kinase

**Protein Pathways:** Calcium signaling pathway, ErbB signaling pathway, Glioma, GnRH signaling pathway, Long-term potentiation, Melanogenesis, Neurotrophin signaling pathway, Olfactory transduction, Oocyte meiosis, Wnt signaling pathway

**Product images:**



Western blot analysis of CaMK2- beta/ gamma/ delta phosphorylation expression in Rat brain tissue lysates, The lane on the left is treated with the antigen-specific peptide.