

## Product datasheet for **TA325285**

### CALM3 Rabbit Polyclonal Antibody

#### Product data:

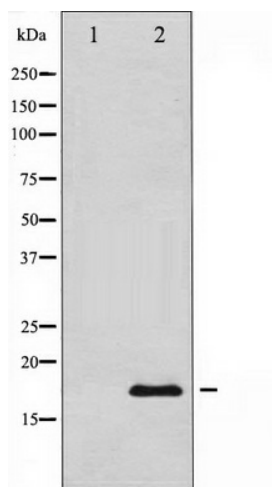
Product Type:	Primary Antibodies
Applications:	WB
Recommended Dilution:	WB: 1:500-1:2000; IHC: 1:50-1:200; IF/ICC: 1:100-1:500
Reactivity:	Human, Mouse, Rat
Host:	Rabbit
Isotype:	IgG
Clonality:	Polyclonal
Immunogen:	The antiserum was produced against A synthesized peptide derived from human Calmodulin
Formulation:	Rabbit IgG in phosphate buffered saline , pH 7.4, 150mM NaCl, 0.02% sodium azide and 50% glycerol.
Concentration:	lot specific
Purification:	The antibody was affinity-purified from rabbit antiserum by affinity-chromatography using epitope-specific peptide.
Conjugation:	Unconjugated
Storage:	Store at -20°C as received.
Stability:	Stable for 12 months from date of receipt.
Predicted Protein Size:	17 kDa
Gene Name:	calmodulin 3 (phosphorylase kinase, delta)
Database Link:	<a href="#">NP_005175</a> <a href="#">Entrez Gene 12315 Mouse</a> <a href="#">Entrez Gene 24244 Rat</a> <a href="#">Entrez Gene 808 Human</a> <a href="#">P62158</a>
Background:	Calmodulin is the archetype of the family of calcium-modulated proteins of which nearly 20 members have been found. They are identified by their occurrence in the cytosol or on membranes facing the cytosol and by a high affinity for calcium.
Synonyms:	HEL-S-72; PHKD; PHKD3
Protein Families:	Druggable Genome



[View online »](#)

**Protein Pathways:**

Alzheimer's disease, Calcium signaling pathway, Glioma, GnRH signaling pathway, Insulin signaling pathway, Long-term potentiation, Melanogenesis, Neurotrophin signaling pathway, Olfactory transduction, Oocyte meiosis, Phosphatidylinositol signaling system, Vascular smooth muscle contraction

**Product images:**

Western blot analysis of Calmodulin expression in NIH-3T3 whole cell lysates, The lane on the left is treated with the antigen-specific peptide.