

## Product datasheet for **TA325277**

### BMX Rabbit Polyclonal Antibody

#### Product data:

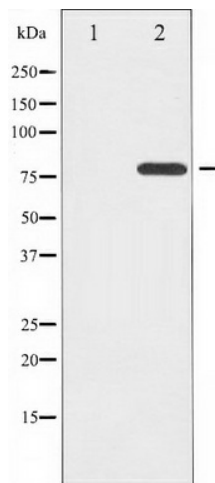
Product Type:	Primary Antibodies
Applications:	WB
Recommended Dilution:	WB: 1:500-1:2000; IHC: 1:50-1:200
Reactivity:	Human, Mouse
Modifications:	Phospho-specific
Host:	Rabbit
Isotype:	IgG
Clonality:	Polyclonal
Immunogen:	The antiserum was produced against A synthesized peptide derived from human ETK around the phosphorylation site of Tyrosine 566
Formulation:	Rabbit IgG in phosphate buffered saline , pH 7.4, 150mM NaCl, 0.02% sodium azide and 50% glycerol.
Concentration:	lot specific
Purification:	The antibody was affinity-purified from rabbit antiserum by affinity-chromatography using epitope-specific peptide.
Conjugation:	Unconjugated
Storage:	Store at -20°C as received.
Stability:	Stable for 12 months from date of receipt.
Predicted Protein Size:	78 kDa
Gene Name:	BMX non-receptor tyrosine kinase
Database Link:	<a href="#">NP_001712</a> <a href="#">Entrez Gene 12169 Mouse</a> <a href="#">Entrez Gene 660 Human</a> <a href="#">P51813</a>
Background:	a tyrosine kinase of the Tec family. Activity is required for IL6-induced differentiation. May play a role in the growth and differentiation of hematopoietic cells. May be involved in signal transduction in endocardial and arterial endothelial cells.
Synonyms:	ETK; PSCTK2; PSCTK3



[View online »](#)

Protein Families: Druggable Genome, Protein Kinase

### Product images:



Western blot analysis of ETK phosphorylation expression in Serum treated HeLa whole cell lysates, The lane on the left is treated with the antigen-specific peptide.