

## Product datasheet for **TA325274**

### **BIRC5 Rabbit Polyclonal Antibody**

#### **Product data:**

<b>Product Type:</b>	Primary Antibodies
<b>Applications:</b>	WB
<b>Recommended Dilution:</b>	WB: 1:500-1:2000; IHC: 1:50-1:200; IF/ICC: 1:100-1:500
<b>Reactivity:</b>	Human, Mouse, Rat
<b>Modifications:</b>	Phospho-specific
<b>Host:</b>	Rabbit
<b>Isotype:</b>	IgG
<b>Clonality:</b>	Polyclonal
<b>Immunogen:</b>	The antiserum was produced against A synthesized peptide derived from human Survivin around the phosphorylation site of Threonine 117
<b>Formulation:</b>	Rabbit IgG in phosphate buffered saline , pH 7.4, 150mM NaCl, 0.02% sodium azide and 50% glycerol.
<b>Concentration:</b>	lot specific
<b>Purification:</b>	The antibody was affinity-purified from rabbit antiserum by affinity-chromatography using epitope-specific peptide.
<b>Conjugation:</b>	Unconjugated
<b>Storage:</b>	Store at -20°C as received.
<b>Stability:</b>	Stable for 12 months from date of receipt.
<b>Predicted Protein Size:</b>	16 kDa
<b>Gene Name:</b>	baculoviral IAP repeat containing 5
<b>Database Link:</b>	<a href="#">NP_001012270</a> <a href="#">Entrez Gene 11799 MouseEntrez Gene 64041 RatEntrez Gene 332 Human O15392</a>
<b>Background:</b>	survivin is an apoptosis inhibitor that is expressed during the G2/M phase of the cell cycle. Associates with the microtubules of the mitotic spindle and any disruption results in the loss of apoptosis activity. May play a role in neoplasia.
<b>Synonyms:</b>	API4; EPR-1

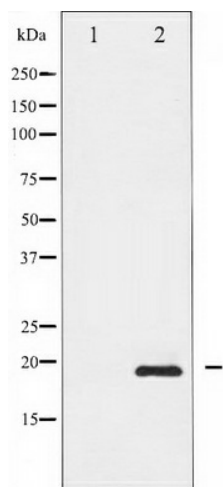


[View online »](#)

Protein Families: Druggable Genome, Stem cell - Pluripotency

Protein Pathways: Colorectal cancer, Pathways in cancer

**Product images:**



Western blot analysis of Survivin phosphorylation expression in A549 whole cell lysates, The lane on the left is treated with the antigen-specific peptide.