

## Product datasheet for **TA325271**

### BIK Rabbit Polyclonal Antibody

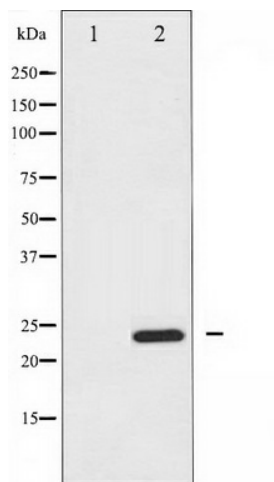
#### Product data:

Product Type:	Primary Antibodies
Applications:	WB
Recommended Dilution:	WB: 1:500-1:2000; IHC: 1:50-1:200; IF/ICC: 1:100-1:500
Reactivity:	Human
Host:	Rabbit
Isotype:	IgG
Clonality:	Polyclonal
Immunogen:	The antiserum was produced against A synthesized peptide derived from human BIK
Formulation:	Rabbit IgG in phosphate buffered saline , pH 7.4, 150mM NaCl, 0.02% sodium azide and 50% glycerol.
Concentration:	lot specific
Purification:	The antibody was affinity-purified from rabbit antiserum by affinity-chromatography using epitope-specific peptide.
Conjugation:	Unconjugated
Storage:	Store at -20°C as received.
Stability:	Stable for 12 months from date of receipt.
Predicted Protein Size:	23 kDa
Gene Name:	BCL2 interacting killer
Database Link:	<a href="#">NP_001188</a> <a href="#">Entrez Gene 638 Human</a> <a href="#">Q13323</a>
Background:	The protein encoded by this gene is known to interact with cellular and viral survival-promoting proteins, such as BCL2 and the Epstein-Barr virus in order to enhance programmed cell death. Because its activity is suppressed in the presence of survival-promoting proteins, this protein is suggested as a likely target for antiapoptotic proteins.
Synonyms:	BIP1; BP4; NBK
Protein Families:	Druggable Genome, Stem cell - Pluripotency, Transmembrane



[View online »](#)

## Product images:



Western blot analysis of BIK expression in A549 whole cell lysates, The lane on the left is treated with the antigen-specific peptide.