

## Product datasheet for **TA325269**

### BCR Rabbit Polyclonal Antibody

#### Product data:

Product Type:	Primary Antibodies
Applications:	WB
Recommended Dilution:	WB: 1:500-1:2000
Reactivity:	Human, Mouse
Modifications:	Phospho-specific
Host:	Rabbit
Isotype:	IgG
Clonality:	Polyclonal
Immunogen:	The antiserum was produced against A synthesized peptide derived from human Bcr around the phosphorylation site of Tyrosine 177
Formulation:	Rabbit IgG in phosphate buffered saline , pH 7.4, 150mM NaCl, 0.02% sodium azide and 50% glycerol.
Concentration:	lot specific
Purification:	The antibody was affinity-purified from rabbit antiserum by affinity-chromatography using epitope-specific peptide.
Conjugation:	Unconjugated
Storage:	Store at -20°C as received.
Stability:	Stable for 12 months from date of receipt.
Predicted Protein Size:	160 kDa
Gene Name:	BCR, RhoGEF and GTPase activating protein
Database Link:	<a href="#">NP_004318</a> <a href="#">Entrez Gene 110279 Mouse</a> <a href="#">Entrez Gene 613 Human</a> <a href="#">P11274</a>
Background:	Bcr is a serine/threonine and GTPase-activating protein (GAP). breakpoint cluster region protein. GTPase-activating protein for RAC1 and CDC42. Promotes the exchange of RAC or CDC42-bound GDP by GTP, thereby activating them.
Synonyms:	ALL; BCR1; CML; D22S11; D22S662; PHL

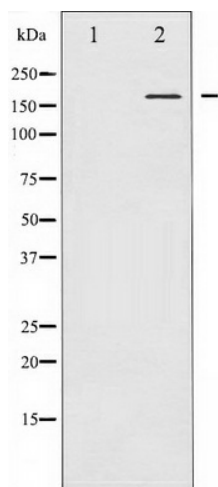


[View online »](#)

Protein Families: Druggable Genome, Protein Kinase

Protein Pathways: Chronic myeloid leukemia, Pathways in cancer

**Product images:**



Western blot analysis of Bcr phosphorylation expression in K562 whole cell lysates, The lane on the left is treated with the antigen-specific peptide.