

Product datasheet for **TA325267**

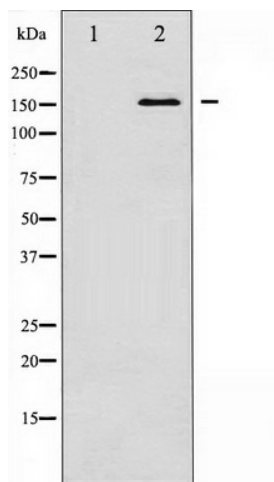
BCR Rabbit Polyclonal Antibody

Product data:

| | |
|-------------------------|--|
| Product Type: | Primary Antibodies |
| Applications: | WB |
| Recommended Dilution: | WB: 1:500-1:2000 |
| Reactivity: | Human, Mouse |
| Host: | Rabbit |
| Isotype: | IgG |
| Clonality: | Polyclonal |
| Immunogen: | The antiserum was produced against A synthesized peptide derived from human Bcr |
| Formulation: | Rabbit IgG in phosphate buffered saline , pH 7.4, 150mM NaCl, 0.02% sodium azide and 50% glycerol. |
| Concentration: | lot specific |
| Purification: | The antibody was affinity-purified from rabbit antiserum by affinity-chromatography using epitope-specific peptide. |
| Conjugation: | Unconjugated |
| Storage: | Store at -20°C as received. |
| Stability: | Stable for 12 months from date of receipt. |
| Predicted Protein Size: | 160 kDa |
| Gene Name: | BCR, RhoGEF and GTPase activating protein |
| Database Link: | NP_004318 Entrez Gene 110279 Mouse Entrez Gene 613 Human P11274 |
| Background: | Bcr is a serine/threonine and GTPase-activating protein (GAP). breakpoint cluster region protein. GTPase-activating protein for RAC1 and CDC42. Promotes the exchange of RAC or CDC42-bound GDP by GTP, thereby activating them. |
| Synonyms: | ALL; BCR1; CML; D22S11; D22S662; PHL |
| Protein Families: | Druggable Genome, Protein Kinase |
| Protein Pathways: | Chronic myeloid leukemia, Pathways in cancer |



[View online »](#)

Product images:

Western blot analysis of Bcr expression in K562 whole cell lysates, The lane on the left is treated with the antigen-specific peptide.