

Product datasheet for **TA325257**

BCAR1 Rabbit Polyclonal Antibody

Product data:

Product Type:	Primary Antibodies
Applications:	IHC, WB
Recommended Dilution:	WB: 1:500-1:2000; IHC: 1:50-1:200
Reactivity:	Human, Mouse, Rat
Host:	Rabbit
Isotype:	IgG
Clonality:	Polyclonal
Immunogen:	The antiserum was produced against a synthesized A synthesized peptide derived from human p130 Cas.
Formulation:	Rabbit IgG in phosphate buffered saline , pH 7.4, 150mM NaCl, 0.02% sodium azide and 50% glycerol.
Concentration:	lot specific
Purification:	The antibody was affinity-purified from rabbit antiserum by affinity-chromatography using epitope-specific peptide.
Conjugation:	Unconjugated
Storage:	Store at -20°C as received.
Stability:	Stable for 12 months from date of receipt.
Gene Name:	BCAR1, Cas family scaffolding protein
Database Link:	NP_055382 Entrez Gene 12927 MouseEntrez Gene 25414 RatEntrez Gene 9564 Human P56945
Background:	P130Cas a docking protein containing multiple protein-protein interaction domains. Plays a central coordinating role for tyrosine-kinase-based signaling related to cell adhesion. Implicated in induction of cell migration. The amino-terminal SH3 domain regulates its interaction with focal adhesion kinase (FAK) and the FAK-related kinase PYK2 and also with tyrosine phosphatases PTP-1B and PTP-PEST. Overexpression confers antiestrogen resistance on breast cancer cells.
Synonyms:	CAS; CAS1; CASS1; CRKAS; P130Cas

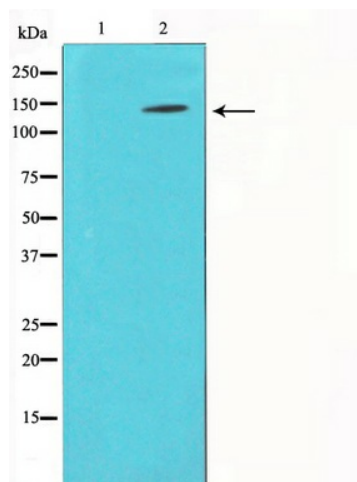


[View online »](#)

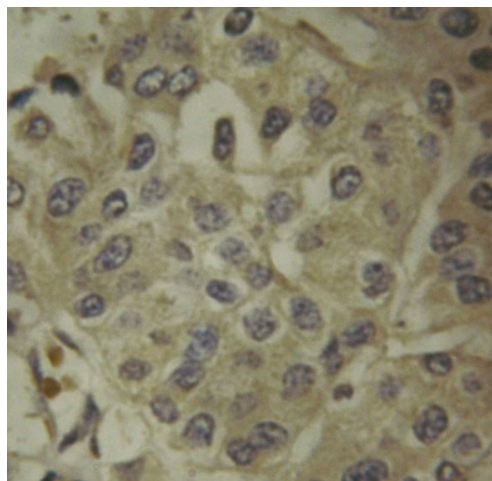
Protein Families: Druggable Genome

Protein Pathways: Chemokine signaling pathway, Focal adhesion, Leukocyte transendothelial migration, Regulation of actin cytoskeleton

Product images:



Western blot analysis on NIH-3T3 cell lysate using p130 Cas Antibody



Immunohistochemical analysis of paraffin-embedded breast carcinoma tissue using p130 Cas Antibody.