

## Product datasheet for **TA325254**

### **BAD Rabbit Polyclonal Antibody**

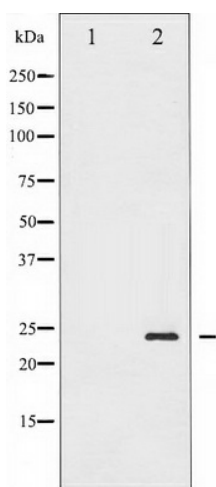
#### **Product data:**

|                                |   |
|--------------------------------|---|
| <b>Product Type:</b>           | Primary Antibodies  |
| <b>Applications:</b>           | WB  |
| <b>Recommended Dilution:</b>   | WB: 1:500-1:2000; IHC: 1:50-1:200   |
| <b>Reactivity:</b>             | Human, Mouse, Rat   |
| <b>Modifications:</b>          | Phospho-specific  |
| <b>Host:</b>                   | Rabbit  |
| <b>Isotype:</b>                | IgG   |
| <b>Clonality:</b>              | Polyclonal  |
| <b>Immunogen:</b>              | The antiserum was produced against A synthesized peptide derived from human BAD around the phosphorylation site of Serine 155   |
| <b>Formulation:</b>            | Rabbit IgG in phosphate buffered saline , pH 7.4, 150mM NaCl, 0.02% sodium azide and 50% glycerol.  |
| <b>Concentration:</b>          | lot specific  |
| <b>Purification:</b>           | The antibody was affinity-purified from rabbit antiserum by affinity-chromatography using epitope-specific peptide.   |
| <b>Conjugation:</b>            | Unconjugated  |
| <b>Storage:</b>                | Store at -20°C as received.   |
| <b>Stability:</b>              | Stable for 12 months from date of receipt.  |
| <b>Predicted Protein Size:</b> | 23 kDa  |
| <b>Gene Name:</b>              | BCL2 associated agonist of cell death   |
| <b>Database Link:</b>          | <a href="#">NP_004313</a><br><a href="#">Entrez Gene 12015 MouseEntrez Gene 64639 RatEntrez Gene 572 Human Q92934</a>   |
| <b>Background:</b>             | The protein encoded by this gene is a member of the BCL-2 family. BCL-2 family members are known to be regulators of programmed cell death. This protein positively regulates cell apoptosis by forming heterodimers with BCL-xL and BCL-2, and reversing their death repressor activity. |



[View online »](#)

|                          |   |
|--------------------------|---|
| <b>Synonyms:</b>         | BBC2; BCL2L8  |
| <b>Protein Families:</b> | Druggable Genome  |
| <b>Protein Pathways:</b> | Acute myeloid leukemia, Alzheimer's disease, Amyotrophic lateral sclerosis (ALS), Apoptosis, Chronic myeloid leukemia, Colorectal cancer, Endometrial cancer, ErbB signaling pathway, Focal adhesion, Insulin signaling pathway, Melanoma, Neurotrophin signaling pathway, Non-small cell lung cancer, Pancreatic cancer, Pathways in cancer, Prostate cancer, VEGF signaling pathway |

**Product images:**

Western blot analysis of BAD phosphorylation expression in Forskolin treated 293 whole cell lysates, The lane on the left is treated with the antigen-specific peptide.