

## Product datasheet for **TA325247**

### Aurora A (AURKA) Rabbit Polyclonal Antibody

#### Product data:

Product Type:	Primary Antibodies
Applications:	WB
Recommended Dilution:	WB: 1:500-1:2000
Reactivity:	Human, Mouse, Rat
Host:	Rabbit
Isotype:	IgG
Clonality:	Polyclonal
Immunogen:	The antiserum was produced against A synthesized peptide derived from human Aurora Kinase
Formulation:	Rabbit IgG in phosphate buffered saline , pH 7.4, 150mM NaCl, 0.02% sodium azide and 50% glycerol.
Concentration:	lot specific
Purification:	The antibody was affinity-purified from rabbit antiserum by affinity-chromatography using epitope-specific peptide.
Conjugation:	Unconjugated
Storage:	Store at -20°C as received.
Stability:	Stable for 12 months from date of receipt.
Predicted Protein Size:	45 kDa
Gene Name:	aurora kinase A
Database Link:	<a href="#">NP_003591</a> <a href="#">Entrez Gene 20878 Mouse</a> <a href="#">Entrez Gene 261730 Rat</a> <a href="#">Entrez Gene 6790 Human</a> <a href="#">O14965</a>
Background:	The protein encoded by this gene is a cell cycle-regulated kinase that appears to be involved in microtubule formation and/or stabilization at the spindle pole during chromosome segregation. The encoded protein is found at the centrosome in interphase cells and at the spindle poles in mitosis. This gene may play a role in tumor development and progression.
Synonyms:	AIK; ARK1; AURA; BTAK; PPP1R47; STK6; STK7; STK15

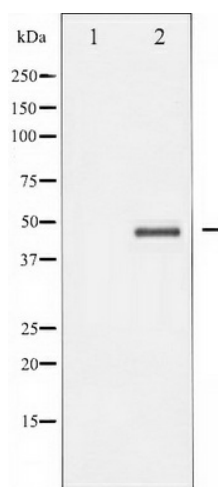


[View online »](#)

Protein Families: Druggable Genome, Protein Kinase, Stem cell - Pluripotency

Protein Pathways: Oocyte meiosis

### Product images:



Western blot analysis of Aurora Kinase expression in serum treated 293 whole cell lysates, The lane on the left is treated with the antigen-specific peptide.