

## Product datasheet for **TA325246**

### Ataxin 1 (ATXN1) Rabbit Polyclonal Antibody

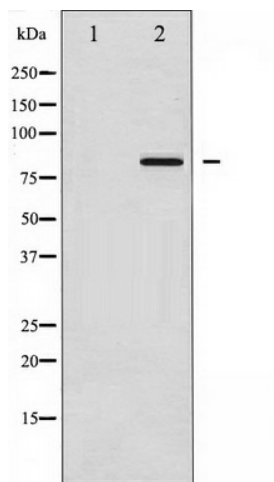
#### Product data:

Product Type:	Primary Antibodies
Applications:	WB
Recommended Dilution:	WB: 1:500-1:2000; IF/ICC: 1:100-1:500
Reactivity:	Human, Mouse
Modifications:	Phospho-specific
Host:	Rabbit
Isotype:	IgG
Clonality:	Polyclonal
Immunogen:	The antiserum was produced against A synthesized peptide derived from human Ataxin 1 around the phosphorylation site of Serine 776
Formulation:	Rabbit IgG in phosphate buffered saline , pH 7.4, 150mM NaCl, 0.02% sodium azide and 50% glycerol.
Concentration:	lot specific
Purification:	The antibody was affinity-purified from rabbit antiserum by affinity-chromatography using epitope-specific peptide.
Conjugation:	Unconjugated
Storage:	Store at -20°C as received.
Stability:	Stable for 12 months from date of receipt.
Predicted Protein Size:	87 kDa
Gene Name:	ataxin 1
Database Link:	<a href="#">NP_000323</a> <a href="#">Entrez Gene 20238 Mouse</a> <a href="#">Entrez Gene 6310 Human</a> <a href="#">P54253</a>
Background:	ataxin-1 is a spinocerebellar ataxia type 1 (SCA1) protein. Expansion of CAG repeats in the SCA1 gene results in an abnormally long polyglutamine tract in the protein, causing polyglutamine-induced neurodegeneration.
Synonyms:	ATX1; D6S504E; SCA1



[View online »](#)

## Product images:



Western blot analysis of Ataxin 1 phosphorylation expression in Adriamycin treated HepG2 whole cell lysates, The lane on the left is treated with the antigen-specific peptide.