

Product datasheet for **TA325244**

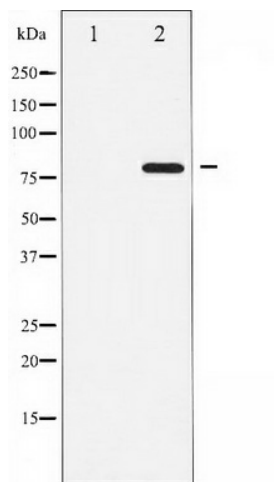
ATRIP Rabbit Polyclonal Antibody

Product data:

Product Type:	Primary Antibodies
Applications:	WB
Recommended Dilution:	WB: 1:500-1:2000
Reactivity:	Human, Mouse, Rat
Modifications:	Phospho-specific
Host:	Rabbit
Isotype:	IgG
Clonality:	Polyclonal
Immunogen:	The antiserum was produced against A synthesized peptide derived from human ATRIP around the phosphorylation site of Serine 68
Formulation:	Rabbit IgG in phosphate buffered saline , pH 7.4, 150mM NaCl, 0.02% sodium azide and 50% glycerol.
Concentration:	lot specific
Purification:	The antibody was affinity-purified from rabbit antiserum by affinity-chromatography using epitope-specific peptide.
Conjugation:	Unconjugated
Storage:	Store at -20°C as received.
Stability:	Stable for 12 months from date of receipt.
Predicted Protein Size:	80 kDa
Gene Name:	ATR interacting protein
Database Link:	NP_001257951 Entrez Gene 235610 MouseEntrez Gene 301014 RatEntrez Gene 84126 Human Q8WXE1
Background:	ATRIP is required for checkpoint signaling after DNA damage. Required for ATR expression, possibly by stabilizing the protein.
Synonyms:	AGS1; DKFZp762J2115; FLJ12343; MGC20625; MGC21482; MGC26740



[View online »](#)

Product images:

Western blot analysis of ATRIP phosphorylation expression in NIH-3T3 whole cell lysates, The lane on the left is treated with the antigen-specific peptide.