

Product datasheet for **TA325242**

Atp1a1 Rabbit Polyclonal Antibody

Product data:

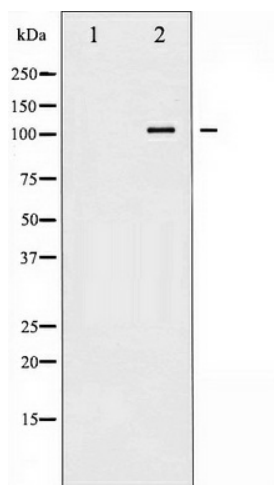
Product Type:	Primary Antibodies
Applications:	WB
Recommended Dilution:	WB: 1:500-1:2000; IF/ICC: 1:100-1:500
Reactivity:	Rat
Modifications:	Phospho-specific
Host:	Rabbit
Isotype:	IgG
Clonality:	Polyclonal
Immunogen:	The antiserum was produced against A synthesized peptide derived from human ATP1 alpha1/Na+K+ ATPase1 around the phosphorylation site of Serine 23
Formulation:	Rabbit IgG in phosphate buffered saline , pH 7.4, 150mM NaCl, 0.02% sodium azide and 50% glycerol.
Concentration:	lot specific
Purification:	The antibody was affinity-purified from rabbit antiserum by affinity-chromatography using epitope-specific peptide.
Conjugation:	Unconjugated
Storage:	Store at -20°C as received.
Stability:	Stable for 12 months from date of receipt.
Predicted Protein Size:	113 kDa
Gene Name:	ATPase Na+/K+ transporting subunit alpha 1
Database Link:	NP_036636 Entrez Gene 24211 Rat P06685
Background:	ATP1A1 the catalytic component of the active enzyme, which catalyzes the hydrolysis of ATP coupled with the exchange of Na and K ions across the plasma membrane. This action creates the electrochemical gradient of Na and K, providing the energy for active transport of various nutrients.



[View online »](#)

Synonyms: MGC3285; MGC51750

Product images:



Western blot analysis of ATP1 alpha1/Na⁺K⁺ ATPase1 phosphorylation expression in Rat brain tissue lysates, The lane on the left is treated with the antigen-specific peptide.