

Product datasheet for **TA325239**

Sodium Potassium ATPase (ATP1A1) Rabbit Polyclonal Antibody

Product data:

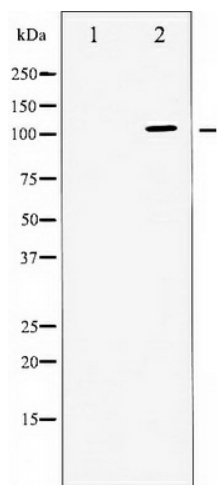
Product Type:	Primary Antibodies
Applications:	WB
Recommended Dilution:	WB: 1:500-1:2000; IHC: 1:50-1:200; IF/ICC: 1:100-1:500
Reactivity:	Human, Mouse, Rat
Host:	Rabbit
Isotype:	IgG
Clonality:	Polyclonal
Immunogen:	The antiserum was produced against A synthesized peptide derived from human ATPase
Formulation:	Rabbit IgG in phosphate buffered saline , pH 7.4, 150mM NaCl, 0.02% sodium azide and 50% glycerol.
Concentration:	lot specific
Purification:	The antibody was affinity-purified from rabbit antiserum by affinity-chromatography using epitope-specific peptide.
Conjugation:	Unconjugated
Storage:	Store at -20°C as received.
Stability:	Stable for 12 months from date of receipt.
Predicted Protein Size:	112 kDa
Gene Name:	ATPase Na ⁺ /K ⁺ transporting subunit alpha 1
Database Link:	NP_000692 Entrez Gene 11928 Mouse Entrez Gene 24211 Rat Entrez Gene 476 Human P05023
Background:	The protein encoded by this gene belongs to the family of P-type cation transport ATPases, and to the subfamily of Na ⁺ /K ⁺ -ATPases. Na ⁺ /K ⁺ -ATPase is an integral membrane protein responsible for establishing and maintaining the electrochemical gradients of Na and K ions across the plasma membrane.
Synonyms:	MGC3285; MGC51750
Protein Families:	Druggable Genome, Transmembrane



[View online »](#)

Protein Pathways: Cardiac muscle contraction

Product images:



Western blot analysis of ATPase expression in PMA treated 293 whole cell lysates, The lane on the left is treated with the antigen-specific peptide.