

## Product datasheet for **TA325233**

### ATF2 Rabbit Polyclonal Antibody

#### Product data:

Product Type:	Primary Antibodies
Applications:	WB
Recommended Dilution:	WB: 1:500-1:2000; IHC: 1:50-1:200; IP
Reactivity:	Human, Mouse, Rat
Host:	Rabbit
Isotype:	IgG
Clonality:	Polyclonal
Immunogen:	The antiserum was produced against A synthesized peptide derived from human ATF2
Formulation:	Rabbit IgG in phosphate buffered saline , pH 7.4, 150mM NaCl, 0.02% sodium azide and 50% glycerol.
Concentration:	lot specific
Purification:	The antibody was affinity-purified from rabbit antiserum by affinity-chromatography using epitope-specific peptide.
Conjugation:	Unconjugated
Storage:	Store at -20°C as received.
Stability:	Stable for 12 months from date of receipt.
Predicted Protein Size:	52 kDa
Gene Name:	activating transcription factor 2
Database Link:	<a href="#">NP_001871</a> <a href="#">Entrez Gene 11909 Mouse</a> <a href="#">Entrez Gene 81647 Rat</a> <a href="#">Entrez Gene 1386 Human</a> <a href="#">P15336</a>
Background:	This gene encodes a transcription factor that is a member of the leucine zipper family of DNA binding proteins. This protein binds to the cAMP-responsive element (CRE), an octameric palindrome. The protein forms a homodimer or heterodimer with c-Jun and stimulates CRE-dependent transcription. The protein is also a histone acetyltransferase (HAT) that specifically acetylates histones H2B and H4 in vitro;
Synonyms:	CRE-BP1; CREB-2; CREB2; HB16; TREB7

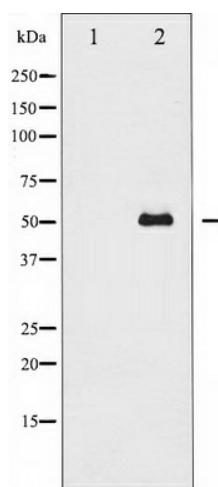


[View online »](#)

Protein Families: Druggable Genome, Transcription Factors

Protein Pathways: MAPK signaling pathway

### Product images:



Western blot analysis of ATF2 expression in MDA-MB-435 whole cell lysates, The lane on the left is treated with the antigen-specific peptide.