

## Product datasheet for **TA325231**

### ATF1 Rabbit Polyclonal Antibody

#### Product data:

Product Type:	Primary Antibodies
Applications:	WB
Recommended Dilution:	WB: 1:500-1:2000
Reactivity:	Human, Mouse
Modifications:	Phospho-specific
Host:	Rabbit
Isotype:	IgG
Clonality:	Polyclonal
Immunogen:	The antiserum was produced against A synthesized peptide derived from human ATF1 around the phosphorylation site of Serine 63
Formulation:	Rabbit IgG in phosphate buffered saline , pH 7.4, 150mM NaCl, 0.02% sodium azide and 50% glycerol.
Concentration:	lot specific
Purification:	The antibody was affinity-purified from rabbit antiserum by affinity-chromatography using epitope-specific peptide.
Conjugation:	Unconjugated
Storage:	Store at -20°C as received.
Stability:	Stable for 12 months from date of receipt.
Predicted Protein Size:	29 kDa
Gene Name:	activating transcription factor 1
Database Link:	<a href="#">NP_005162</a> <a href="#">Entrez Gene 11908 Mouse</a> <a href="#">Entrez Gene 466 Human</a> <a href="#">P18846</a>
Background:	ATF-1 a transcription factor that is a member of the leucine zipper family. Forms a homodimer or heterodimer with c-Jun and stimulates CRE-dependent transcription. Binds the Tax-responsive element (TRE) of HTLV-I. Activated downstream of IL-1. c-Src and TRAF6 are mediators of IL-1-induced AP-1 activation.

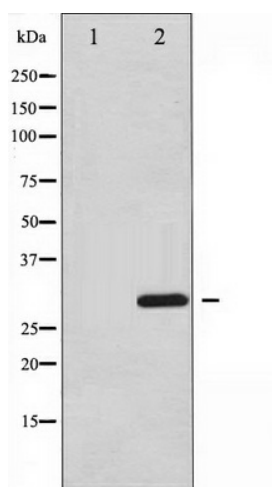


[View online »](#)

Synonyms: ATF-1; EWS-ATF1; FUS; TREB36

Protein Families: Druggable Genome, Transcription Factors

### Product images:



Western blot analysis of ATF1 phosphorylation expression in Insulin treated HT29 whole cell lysates, The lane on the left is treated with the antigen-specific peptide.