

## Product datasheet for **TA325230**

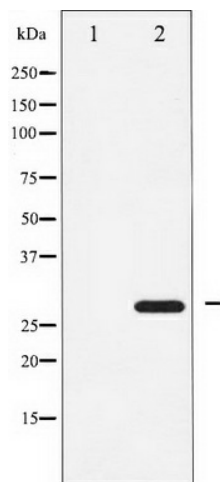
### ATF1 Rabbit Polyclonal Antibody

#### Product data:

|                         |  |
|-------------------------|--|
| Product Type:           | Primary Antibodies   |
| Applications:           | WB   |
| Recommended Dilution:   | WB: 1:500-1:2000; IHC: 1:50-1:200  |
| Reactivity:             | Human, Mouse   |
| Host:                   | Rabbit   |
| Isotype:                | IgG  |
| Clonality:              | Polyclonal   |
| Immunogen:              | The antiserum was produced against A synthesized peptide derived from human ATF1   |
| Formulation:            | Rabbit IgG in phosphate buffered saline , pH 7.4, 150mM NaCl, 0.02% sodium azide and 50% glycerol.   |
| Concentration:          | lot specific   |
| Purification:           | The antibody was affinity-purified from rabbit antiserum by affinity-chromatography using epitope-specific peptide.  |
| Conjugation:            | Unconjugated   |
| Storage:                | Store at -20°C as received.  |
| Stability:              | Stable for 12 months from date of receipt.   |
| Predicted Protein Size: | 29 kDa   |
| Gene Name:              | activating transcription factor 1  |
| Database Link:          | <a href="#">NP_005162</a><br><a href="#">Entrez Gene 11908 Mouse</a> <a href="#">Entrez Gene 466 Human</a><br><a href="#">P18846</a>   |
| Background:             | ATF-1 a transcription factor that is a member of the leucine zipper family. Forms a homodimer or heterodimer with c-Jun and stimulates CRE-dependent transcription. Binds the Tax-responsive element (TRE) of HTLV-I. Activated downstream of IL-1. c-Src and TRAF6 are mediators of IL-1-induced AP-1 activation. |
| Synonyms:               | ATF-1; EWS-ATF1; FUS; TREB36   |
| Protein Families:       | Druggable Genome, Transcription Factors  |



[View online »](#)

**Product images:**

Western blot analysis of ATF1 expression in COLO205 whole cell lysates, The lane on the left is treated with the antigen-specific peptide.