

Product datasheet for **TA325229**

GRLF1 (ARHGAP35) Rabbit Polyclonal Antibody

Product data:

Product Type:	Primary Antibodies
Applications:	WB
Recommended Dilution:	WB: 1:500-1:2000; IHC: 1:50-1:200
Reactivity:	Human, Mouse, Rat
Modifications:	Phospho-specific
Host:	Rabbit
Isotype:	IgG
Clonality:	Polyclonal
Immunogen:	The antiserum was produced against A synthesized peptide derived from human GRF-1 around the phosphorylation site of Tyrosine 1105
Formulation:	Rabbit IgG in phosphate buffered saline , pH 7.4, 150mM NaCl, 0.02% sodium azide and 50% glycerol.
Concentration:	lot specific
Purification:	The antibody was affinity-purified from rabbit antiserum by affinity-chromatography using epitope-specific peptide.
Conjugation:	Unconjugated
Storage:	Store at -20°C as received.
Stability:	Stable for 12 months from date of receipt.
Predicted Protein Size:	155 kDa
Gene Name:	Rho GTPase activating protein 35
Database Link:	NP_004482 Entrez Gene 232906 MouseEntrez Gene 306400 RatEntrez Gene 2909 Human Q9NRY4
Background:	GRF-1 the human glucocorticoid receptor DNA binding factor, which associates with the promoter region of the glucocorticoid receptor gene (hGR gene), is a repressor of glucocorticoid receptor transcription. May participate in the regulation of retinal development and degeneration. May transduce signals from p21-ras to the nucleus, acting via the ras GTP-ase activating protein (GAP).



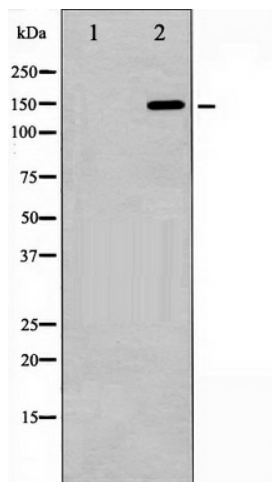
[View online »](#)

Synonyms: GRF-1; GRLF1; P190-A; P190A; p190ARhoGAP; p190RhoGAP

Protein Families: Druggable Genome

Protein Pathways: Focal adhesion, Leukocyte transendothelial migration, Regulation of actin cytoskeleton

Product images:



Western blot analysis of GRF-1 phosphorylation expression in EGF treated 293 whole cell lysates, The lane on the left is treated with the antigen-specific peptide.