

## Product datasheet for **TA325225**

### ALK Rabbit Polyclonal Antibody

#### Product data:

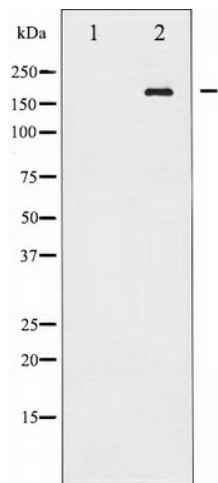
Product Type:	Primary Antibodies
Applications:	WB
Recommended Dilution:	WB: 1:500-1:2000; IHC: 1:50-1:200
Reactivity:	Human, Mouse
Modifications:	Phospho-specific
Host:	Rabbit
Isotype:	IgG
Clonality:	Polyclonal
Immunogen:	The antiserum was produced against A synthesized peptide derived from human ALK around the phosphorylation site of Tyrosine 1507
Formulation:	Rabbit IgG in phosphate buffered saline , pH 7.4, 150mM NaCl, 0.02% sodium azide and 50% glycerol.
Concentration:	lot specific
Purification:	The antibody was affinity-purified from rabbit antiserum by affinity-chromatography using epitope-specific peptide.
Conjugation:	Unconjugated
Storage:	Store at -20°C as received.
Stability:	Stable for 12 months from date of receipt.
Predicted Protein Size:	176 kDa
Gene Name:	anaplastic lymphoma receptor tyrosine kinase
Database Link:	<a href="#">NP_004295</a> <a href="#">Entrez Gene 11682 Mouse</a> <a href="#">Entrez Gene 238 Human</a> <a href="#">Q9UM73</a>
Background:	a tyrosine kinase of the ALK family. Plays an important role in the development of the brain and exerts its effects on specific neurons in the nervous system. Translocated and expressed as a fusion protein in anaplastic lymphoma.
Synonyms:	CD246; NBLST3



[View online »](#)

Protein Families: Druggable Genome, Protein Kinase

### Product images:



Western blot analysis of ALK phosphorylation expression in anisomycin treated COS7 whole cell lysates, The lane on the left is treated with the antigen-specific peptide.