

## Product datasheet for **TA325219**

### AKT1 Rabbit Polyclonal Antibody

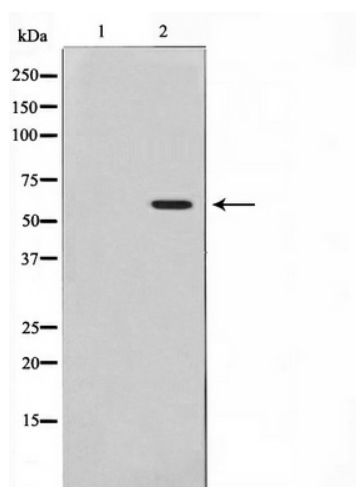
#### Product data:

|                         |  |
|-------------------------|--|
| Product Type:           | Primary Antibodies   |
| Applications:           | WB   |
| Recommended Dilution:   | WB: 1:500-1:2000; IHC: 1:50-1:200  |
| Reactivity:             | Human, Mouse, Rat  |
| Modifications:          | Phospho-specific   |
| Host:                   | Rabbit   |
| Isotype:                | IgG  |
| Clonality:              | Polyclonal   |
| Immunogen:              | The antiserum was produced against A synthesized peptide derived from human Akt around the phosphorylation site of Threonine 308   |
| Formulation:            | Rabbit IgG in phosphate buffered saline , pH 7.4, 150mM NaCl, 0.02% sodium azide and 50% glycerol.   |
| Concentration:          | lot specific   |
| Purification:           | The antibody was affinity-purified from rabbit antiserum by affinity-chromatography using epitope-specific peptide.  |
| Conjugation:            | Unconjugated   |
| Storage:                | Store at -20°C as received.  |
| Stability:              | Stable for 12 months from date of receipt.   |
| Predicted Protein Size: | 60 kDa   |
| Gene Name:              | AKT serine/threonine kinase 1  |
| Database Link:          | <a href="#">NP_001014431</a><br><a href="#">Entrez Gene 11651 MouseEntrez Gene 24185 RatEntrez Gene 207 Human P31749</a>   |
| Background:             | Akt2 an AGC kinase. Plays critical roles in glucose metabolism and the development or maintenance of proper adipose tissue and islet mass for which other Akt/PKB isoforms are unable to fully compensate. Amplified and overexpressed in human ovarian carcinoma cell lines and amplified in some primary ovarian and pancreatic tumors. Antisense blocks invasiveness in xenografts. |



[View online »](#)

|                          |   |
|--------------------------|---|
| <b>Synonyms:</b>         | AKT; CWS6; PKB; PKB-ALPHA; PRKBA; RAC; RAC-ALPHA  |
| <b>Protein Families:</b> | Druggable Genome, ES Cell Differentiation/IPS, Protein Kinase   |
| <b>Protein Pathways:</b> | Acute myeloid leukemia, Adipocytokine signaling pathway, Apoptosis, B cell receptor signaling pathway, Chemokine signaling pathway, Chronic myeloid leukemia, Colorectal cancer, Endometrial cancer, ErbB signaling pathway, Fc epsilon RI signaling pathway, Fc gamma R-mediated phagocytosis, Focal adhesion, Glioma, Insulin signaling pathway, Jak-STAT signaling pathway, MAPK signaling pathway, Melanoma, mTOR signaling pathway, Neurotrophin signaling pathway, Non-small cell lung cancer, Pancreatic cancer, Pathways in cancer, Progesterone-mediated oocyte maturation, Prostate cancer, Renal cell carcinoma, Small cell lung cancer, T cell receptor signaling pathway, Tight junction, Toll-like receptor signaling pathway, VEGF signaling pathway |

**Product images:**

Western blot analysis of Akt phosphorylation expression in Insulin treated 293 whole cell lysates. The lane on the left is treated with the antigen-specific peptide.