

Product datasheet for **TA325209**

beta 2 Adrenergic Receptor (ADRB2) Rabbit Polyclonal Antibody

Product data:

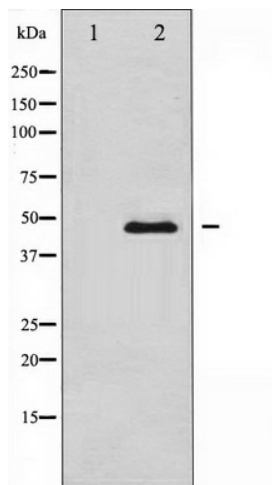
Product Type:	Primary Antibodies
Applications:	WB
Recommended Dilution:	WB: 1:500-1:2000; IHC: 1:50-1:200; IF/ICC: 1:100-1:500
Reactivity:	Human
Host:	Rabbit
Isotype:	IgG
Clonality:	Polyclonal
Immunogen:	The antiserum was produced against A synthesized peptide derived from human Adrenergic Receptor beta2
Formulation:	Rabbit IgG in phosphate buffered saline , pH 7.4, 150mM NaCl, 0.02% sodium azide and 50% glycerol.
Concentration:	lot specific
Purification:	The antibody was affinity-purified from rabbit antiserum by affinity-chromatography using epitope-specific peptide.
Conjugation:	Unconjugated
Storage:	Store at -20°C as received.
Stability:	Stable for 12 months from date of receipt.
Predicted Protein Size:	47 kDa
Gene Name:	adrenoceptor beta 2
Database Link:	NP_000015 Entrez Gene 154 Human P07550
Background:	This gene encodes beta-2-adrenergic receptor which is a member of the G protein-coupled receptor superfamily. This receptor is directly associated with one of its ultimate effectors, the class C L-type calcium channel Ca(V)1.2.
Synonyms:	ADRB2R; ADRBR; B2AR; BAR; BETA2AR
Protein Families:	Druggable Genome, GPCR, Transmembrane



[View online »](#)

Protein Pathways: Calcium signaling pathway, Endocytosis, Neuroactive ligand-receptor interaction

Product images:



Western blot analysis of Adrenergic Receptor beta2 expression in NIH-3T3 whole cell lysates, The lane on the left is treated with the antigen-specific peptide.